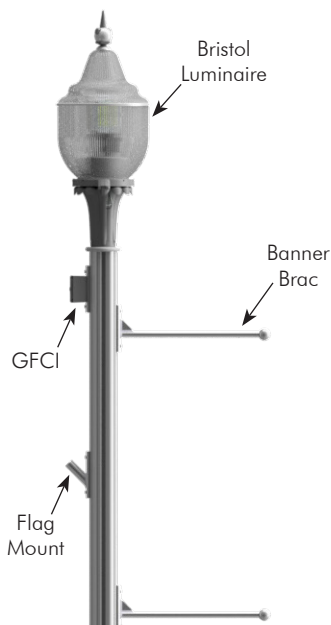


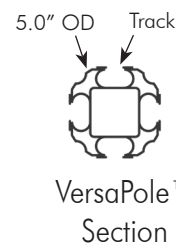
The Pelco's VersaPole is a fully customizable track mounting system that allows accessories to be installed, adjusted, and removed easily. It provides a decorative solution for midblock area lighting and includes both internal and external wiring raceways. Various pole top and base options available.

VersaPole™ Assy, Alum w/ Track Mounting System & Base

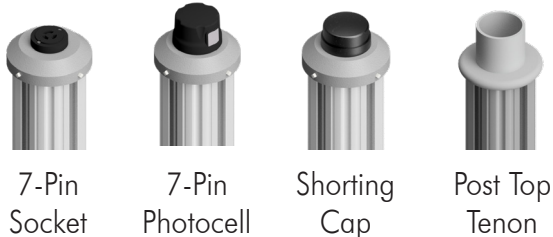
Height	Pole Top	Base	Coating
AP-8705 - <input type="text"/>	- <input type="text"/>	- <input type="text"/>	- <input type="text"/>
12=12'-0"	Blank = Pole Cap Only	LB=LeGrande	P__=Paint
14=14'-0"	7P = 7 Pin Socket	MB=Manchester	
16=16'-0"	PC=7 Pin Photocell	HB=Hamilton	
18=18'-0"	SC=Shorting Cap		
	PT2.88=2-7/8" Post Top		
	PT3.50=3-1/2" Post Top		



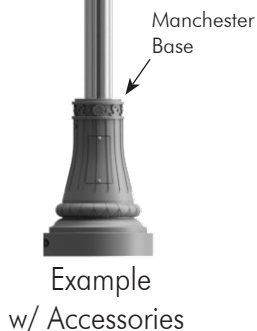
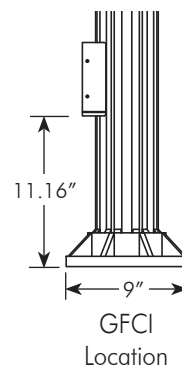
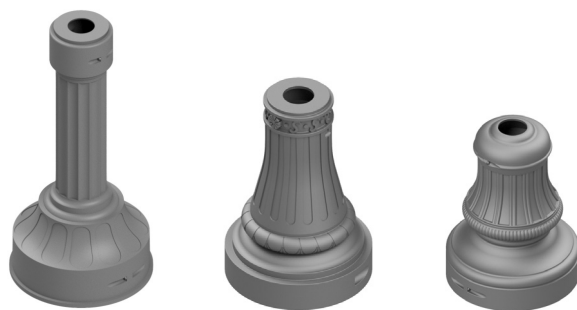
AB-0392
Track Inserts,
ABS Black Plastic
(optional)



Pole Top Options



Aluminum Base Options:



AP-0814-5.08
LeGrande

AP-0819-5.08
Manchester

AP-0816-5.08
Hamilton

AP-8705-16-HB-P59

- Note: 1. See T15-2 through T15-4 for available track mounted accessories.
2. ABS Black Plastic Inserts may be purchased in various lengths to insert into open tracks.
3. See Reference Section page v for available paint colors.

The Pelco's VersaPole is a fully customizable track mounting system that allows accessories to be installed, adjusted, and removed easily. It provides a decorative solution for midblock area lighting and includes both internal and external wiring raceways. Various pole top and base options available.



Luminaire Arm, Arch Braced, Alum VersaPole™

AP-7434 -

Coating



P__=Paint

3.5"
Bolt Circle



Luminaire Adapter



Luminaire Arm, Braced, Alum VersaPole™

AP-7432 -

Coating



P__=Paint

3.5"
Bolt Circle



Luminaire Adapter



Luminaire Arm, Shepherds Hook, Alum VersaPole™

AP-7437 -

Coating



P__=Paint

3.5"
Bolt Circle



Luminaire Adapter



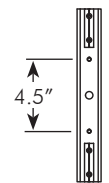
Adapter for Shepherds Hook, Alum VersaPole™

AP-7104 -

Coating



P__=Paint



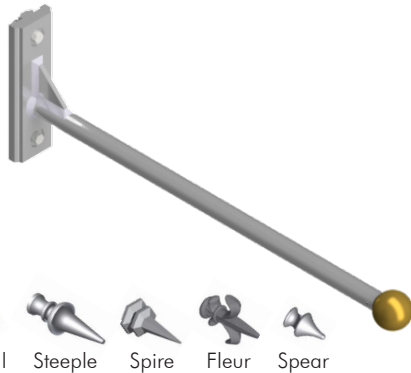
Shepherds Hook
Mount

Note: 1. See T15-1 for VersaPole track mounting system.
2. See Reference Section page v for available paint colors.



VersaPole™

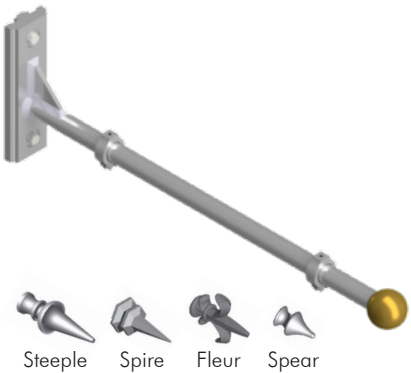
The Pelco's VersaPole is a fully customizable track mounting system that allows accessories to be installed, adjusted, and removed easily. It provides a decorative solution for midblock area lighting and includes both internal and external wiring raceways. Various pole top and base options available.



Banner Bracket, Alum VersaPole™

SH-3570 - - -
 Banner Width Finial/Color Coating
 18=18" BL__=2" Ball P__=Paint
 24=24" ST__=Steeple
 SL__=Spire
 FL__=Fleur
 SE__=1-1/2" Spear

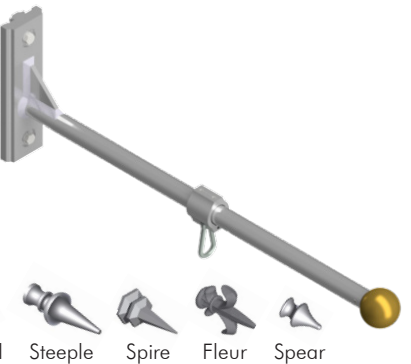
Note:
 2 assemblies required for mounting banner.
 Shown with ball finial. Finial may be ordered as P28 Gold or same color as assembly.



Street Name Sign Bracket, Alum VersaPole™

AP-7435 - - -
 Sign Length Finial/Color Coating
 18=18" BL__=2" Ball P__=Paint
 24=24" ST__=Steeple
 30=30" SL__=Spire
 36=36" FL__=Fleur
 42=42" SE__=1-1/2" Spear
 48=48"

Note:
 Shown with ball finial. Finial may be ordered as P28 Gold or same color as assembly.



Plant Hanger, Alum VersaPole™

AP-7429 - - -
 Banner Width Finial/Color Coating
 18=18" BL__=2" Ball P__=Paint
 24=24" ST__=Steeple
 SL__=Spire
 FL__=Fleur
 SE__=1-1/2" Spear

Note:
 Shown with ball finial. Finial may be ordered as P28 Gold or same color as assembly.



Camera Bracket, 1-1/2" NPS, Alum VersaPole™

SH-0559 - -
 Tube Length Coating
 24=24" P__=Paint

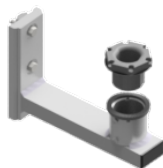
Note: 1. See T15-1 for VersaPole track mounting system.
 2. All assemblies are supplied standard with stainless steel fasteners.
 3. See Reference Section page v for available paint colors.

The Pelco's VersaPole is a fully customizable track mounting system that allows accessories to be installed, adjusted, and removed easily. It provides a decorative solution for midblock area lighting and includes both internal and external wiring raceways. Various pole top and base options available.



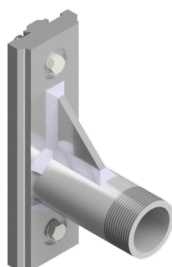
Signal Mount, Upper & Lower Arms, Alum VersaPole™

SE-3350 - Coating
P__=Paint



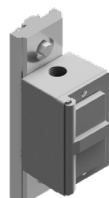
Flag Mount, for 1" Dia Rod, Alum VersaPole™

AP-7430 - Coating
P__=Paint



Equipment Mount, 1-1/2" NPT, Alum VersaPole™

SH-0563 - Length - Coating
04=4" P__=Paint



GFCI Receptacle, Weatherproof, Alum VersaPole™

AP-7431 - Coating
P__=Paint

Note: 1. See T15-1 for VersaPole track mounting system.
2. See Reference Section page v for available paint colors.

Bristol Series Luminaire

The Bristol LED Luminaire provides the look and charm of history. A unique modular electrical unit allows easy access for service. The Bristol Luminaire can be customized for a personalized style and requirement by selecting various options as indicated below.

AP-7520 - Wattage - Voltage - Photocell - Tenon Adapter - Globe - Finial/Color - Rib/Color - Powder Coat

30W=30 Watt
50W=50 Watt

UNV=Universal

NPC=None
7P=Socket Only
PC=w/ Photocell

Blank=None
TA=Tenon
(2-7/8" OD post to 3-1/2" ID Fixture)

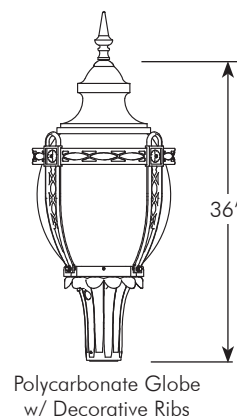
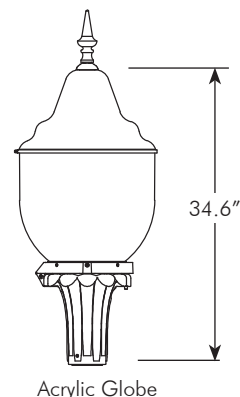
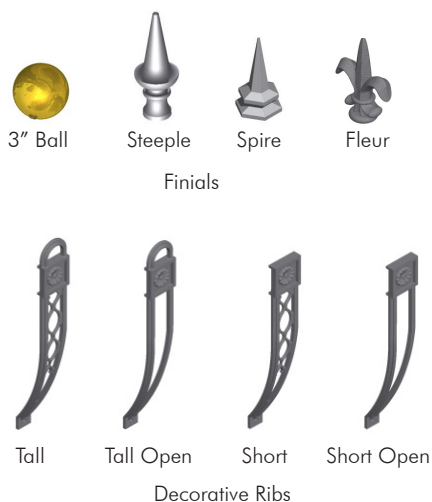
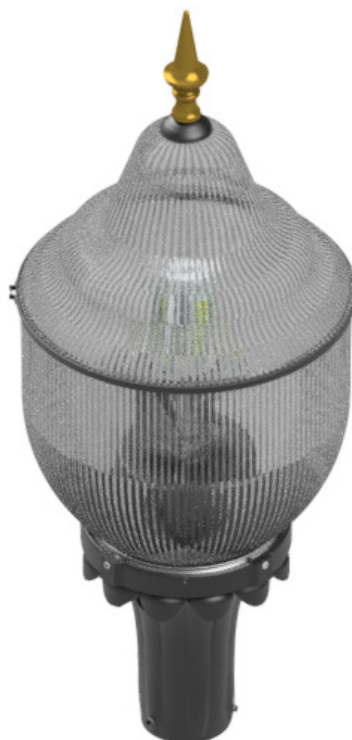
PLL=Polycarbonate Large
T3AC=Type III Acrylic
T5AC=Type V Acrylic
T3DS59=Type III Acrylic, Dark Sky, Color
T5DS59=Type V Acrylic, Dark Sky, Color

BL28=3" Ball, Color
ST28=Steeple, Color
SI28=Spire, Color
FL28=Fleur, Color

Blank=None
T59=Tall, Color
TO59=Tall Open, Color
S59=Short, Color
SO59=Short Open, Color

P59=Textured Black
P30=Automatic Green
P39=Bronze

Notes:
1. All LED Luminaires use 7-pin socket.
2. Universal voltage of LED Luminaires are 120-277V.
3. 59 refers to Textured Black powder coat color.
28 refers to Gold powder coat color.
See Reference Section for additional paint colors available.



Note: 1. See Reference Section for available paint colors.
2. Retrofit Kits are available to easily convert Pelco's existing HID luminaires to LED.

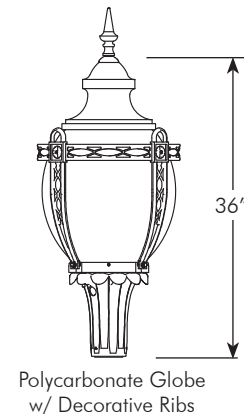
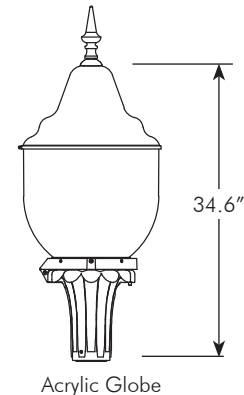
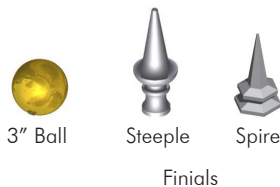
Bristol Series Wall Mount Luminaire

The Bristol Wall Mount LED Luminaire provides the look and charm of history. A unique modular electrical unit allows easy access for service. The Bristol Luminaire can be customized for a personalized style and requirement by selecting various options as indicated below.

Wattage	Voltage	Photocell	Tenon Adapter	Globe	Finial/Color	Rib/Color	Powder Coat
AP-7522 - <input type="text"/>	- <input type="text"/>	- <input type="text"/>	- <input type="text"/>	- <input type="text"/>	- <input type="text"/>	- <input type="text"/>	- <input type="text"/>
30W=30 Watt 50W=50 Watt	UNV=Universal	NPC=None 7P=Socket Only PC=w/ Photocell	Blank=None TA=Tenon (2-7/8" OD post to 3-1/2" ID Fixture)	PLLG=Polycarbonate Large T3AC=Type III Acrylic T5AC=Type V Acrylic T3DS59=Type III Acrylic, Dark Sky, Color T5DS59=Type V Acrylic, Dark Sky, Color	BL28=3" Ball, Color ST28=Steeple, Color SI28=Spire, Color FL28=Fleur, Color	Blank=None T59=Tall, Color TO59=Tall Open, Color S59=Short, Color SO59=Short Open, Color	P59=Textured Black P30=Automatic Green P39=Bronze

Notes:

1. All LED Luminaires use 7-pin socket.
2. Universal voltage of LED Luminaires are 120-277V.
3. 59 refers to Textured Black powder coat color.
28 refers to Gold powder coat color.
See Reference Section for additional paint colors available.



- Note: 1. See Reference Section for available paint colors.
2. Retrofit Kits are available to easily convert Pelco's existing HID luminaires to LED.
3. Mounting hardware not included.



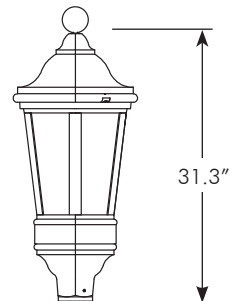
Windsor Series Luminaire

The Windsor LED carriage type luminaire is antique in appearance with a modular electrical unit for easy service access. The lighting panels have unique photometrics that give the appearance of multiple light sources. The Windsor Luminaire can be customized by selecting various options as indicated below.

Wattage	Voltage	Photocell	Tenon Adapter	Finial/Color	Powder Coat
AP-7521 - <input type="text"/>	- <input type="text"/>	- <input type="text"/>	- <input type="text"/>	- <input type="text"/>	- <input type="text"/>
30W=30 Watt 50W=50 Watt	UNV=Universal	NPC=None 7P=Socket Only PC=w/ Photocell	Blank=None TA=Tenon (2-7/8" OD post to 3-1/2" ID Fixture)	BL28=3" Ball, Color ST28=Steeple, Color SI28=Spire, Color FL28=Fleur, Color	P59=Textured Black P30=Automatic Green P39=Bronze

Notes:

1. All LED Luminaires use 7-pin socket.
2. Universal voltage of LED Luminaires are 120-277V.
3. 59 refers to Textured Black powder coat color.
28 refers to Gold powder coat color.
See Reference Section for additional paint colors available.

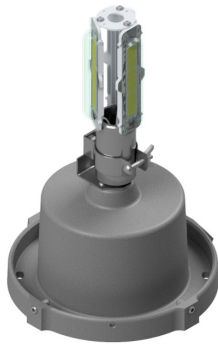


- Note: 1. See Reference Section for available paint colors.
2. Retrofit Kits are available to easily convert Pelco's existing HID luminaires to LED.

This page is intentionally left blank.

LED Luminaire Retrofits

Existing Bristol, Windsor, or Renaissance Luminaires can easily be converted to LED by replacing the electrical modules with LED Retrofit Kits.



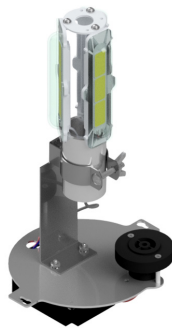
Bristol LED Retrofit Kit, Alum

AP-0655 - Wattage - Voltage - Photocell Socket - Coating
 30W=30 Watt UNV=120-277V NPC=None PNC=Process No Color
 50W=50 Watt 7P=7-Pin Socket P__=Paint



Bristol LED Retrofit Kit w/ Top Plate for 7-Pin Alum

AP-0657 - Wattage - Voltage - Photocell Socket - Coating
 30W=30 Watt UNV=120-277V NPC=None PNC=Process No Color
 50W=50 Watt 7P=7-Pin Socket P__=Paint



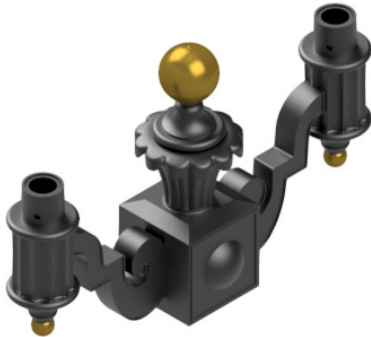
Windsor LED Retrofit Kit, Alum

AP-0658 - Wattage - Voltage - Photocell Socket - Coating
 30W=30 Watt UNV=120-277V NPC=None PNC=Process No Color
 50W=50 Watt 7P=7-Pin Socket P__=Paint

Note: 1. See Reference Section page v for available paint colors.

Arms, Column, and Wall Mounts

Pelco's twin arms can be mounted to a fluted or tapered pole. The twin arms and wall mount can accommodate the Bristol or Windsor luminaire and are available with a variety of finials. Pelco's decorative column mount is available with an optional collar for additional ornamentation.



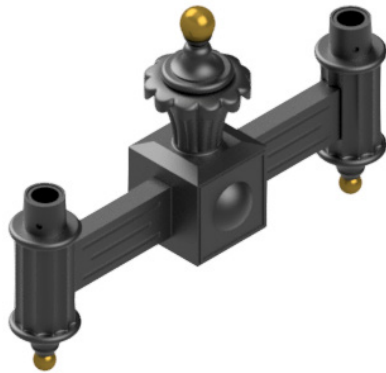
Twin Arm Assy, Fits 2-7/8" Pole Tenon, Alum w/ 3-1/2" Luminaire Tenons, 33" CTC

AP-8203 -

Finial/Color	-	Paint
<input type="text"/>	-	<input type="text"/>
BL__=2" Ball		P__=Paint
SL__=Spire		
SE__=Steeple		
FL__=Fleur		



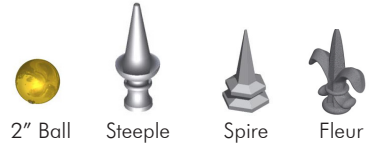
Note:
Finial may be ordered as P28 Gold or same color as assembly, i.e., AP-8203-BL28-P59, for Gold Ball finial and Textured Black assembly.



Twin Arm Assy, Fits 2-7/8" Pole Tenon, Alum w/ 3-1/2" Luminaire Tenons, 35" CTC

AP-8374 -

Finial/Color	-	Paint
<input type="text"/>	-	<input type="text"/>
BL__=2" Ball		P__=Paint
SL__=Spire		
SE__=Steeple		
FL__=Fleur		



Note:
Finial may be ordered as P28 Gold or same color as assembly, i.e., AP-8374-BL28-P59, for Gold Ball finial and Textured Black assembly.



Wall Mount Arm Assy, Alum 16-1/2" Offset from Wall

AP-8230 -

Tenon	-	Finial/Color	-	Paint
<input type="text"/>	-	<input type="text"/>	-	<input type="text"/>
2.8=2-13/16" OD		BL__=2" Ball		P__=Paint
3.5=3-1/2" OD		SL__=Spire		
		SE__=Steeple		
		FL__=Fleur		



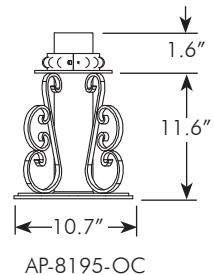
Note:
Finial may be ordered as P28 Gold or same color as assembly, i.e., AP-8230-BL28-P59, for Gold Ball finial and Textured Black assembly.



Column Mount, Alum w/ 3-1/2" Luminaire Tenon 8-1/2" Bolt Circle for 1/2" Hardware

AP-8195 -

Collar	-	Paint
<input type="text"/>	-	<input type="text"/>
Blank=No Collar		P__=Paint
OC=Ornamental Collar		



Note: 1. Mounting hardware not included.
2. See Reference Section page v for available paint colors.



Post Top Luminaire Poles

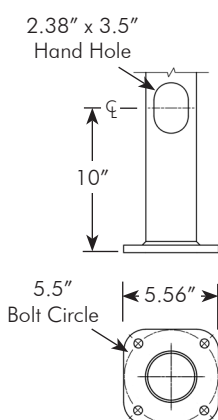
Pelco manufactures a variety of Lighting Poles, straight, fluted, and tapered, that are available for post top mounted luminaires. Poles vary in size, shape, height, and material, and are designed to fit any requirement.



Light Pole, 3-1/2" OD Steel w/ Hand Hole

AP-0220 -

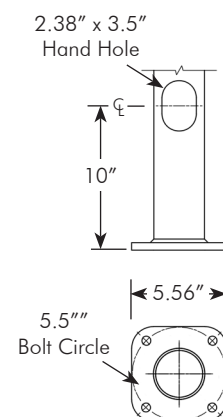
Height	Coating
05=5'	P__=Paint
08=8'	
10=10'	
12=12'	
14=14'	



Light Pole, 3-1/2" OD w/ 2-7/8" OD Tenon Steel w/ Hand Hole

AP-0221 -

Height	Coating
05=5'	P__=Paint
08=8'	
10=10'	
12=12'	
14=14'	



ABS Bases:



AP-0804-3.5-6.7
Old Towne I



AP-0803-3.5-6.7
Rochester



AP-0810-3.5-6.7
Hamilton

Anchors:



AP-1046-GLV
Anchor Bolts Set,
1/2"-13NC



AP-1049-GLV
Anchor Bolt Cage,
1/2"-13NC

Aluminum Bases:



AP-0801-3.5
Old Towne I



AP-0814-3.5
LeGrande

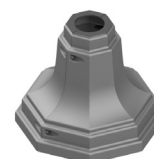


AP-0811-3.5
Country
Club

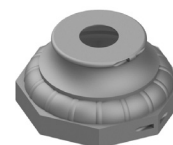
AP-0820-3.5
Huntington



PB-5416-3.5
Octagonal



AP-0817-3.5
Oxford



Note: 1. For additional information on Bases see page T15-27 through T15-31.
2. For Anchors see sections T11 and T12.
3. See Reference Section page v for available paint colors.

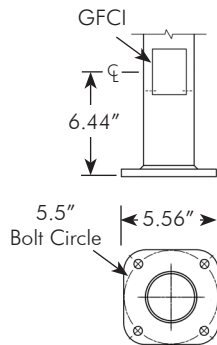
Post Top Luminaire Poles

Pelco manufactures a variety of Lighting Poles, straight, fluted, and tapered, that are available for post top mounted luminaires. Poles vary in size, shape, height, and material, designed to fit any need.



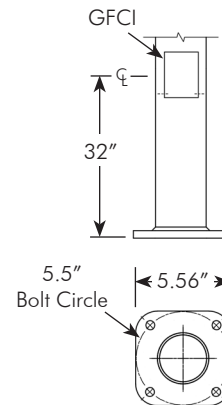
Light Pole, 3-1/2" OD Steel w/ Lower GFCI Option

AP-0302 -	Height	GFCI	Coating
	<input type="text"/>	<input type="text"/>	<input type="text"/>
	05=5'	Blank=w/o Kit	P__=Paint
	08=8'	GFCI=w/ Kit	
	10=10'		
	12=12'		
	14=14'		



Light Pole, 3-1/2" OD Steel w/ GFCI Option

AP-0376 -	Height	GFCI	Coating
	<input type="text"/>	<input type="text"/>	<input type="text"/>
	05=5'	Blank=w/o Kit	P__=Paint
	08=8'	GFCI=w/ Kit	
	10=10'		
	12=12'		
	14=14'		



ABS Bases:

AP-0804-3.5-6.7
Old Towne I
(fits AP-0376 only)



AP-0803-3.5-6.7
Rochester



AP-0810-3.5-6.7
Hamilton



Anchors:

AP-1046-GLV
Anchor Bolts Set,
1/2"-13NC



AP-1049-GLV
Anchor Bolt Cage,
1/2"-13NC

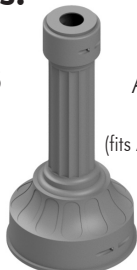


Aluminum Bases:

AP-0801-3.5
Old Towne I
(fits AP-0376 only)



AP-0814-3.5
LeGrande
(fits AP-0376 only)



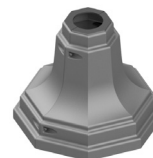
AP-0811-3.5
Country Club



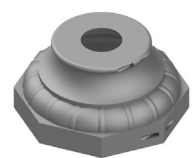
AP-0820-3.5
Huntington
(fits AP-0376 only)



PB-5416-3.5
Octagonal
(fits AP-0376 only)



AP-0817-3.5
Oxford
(fits AP-0376 only)



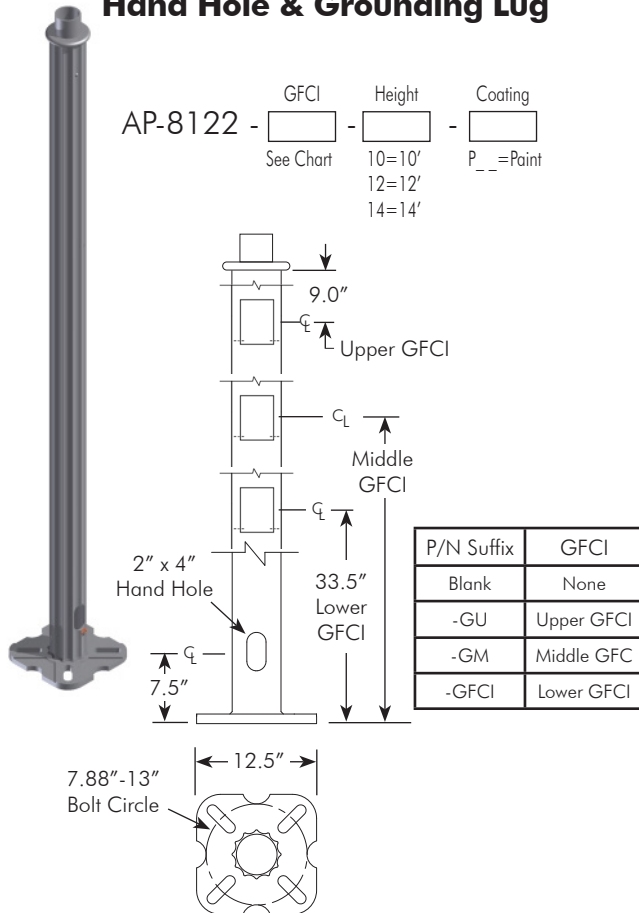
- Note: 1. For additional information on Bases see page T15-27 through T15-31.
2. For Anchors see sections T11 and T12.
3. See Reference Section page v for available paint colors.



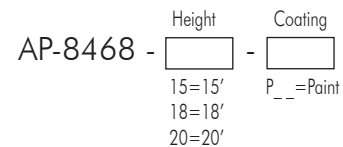
Post Top Luminaire Poles

Pelco manufactures a variety of Lighting Poles, straight, fluted, and tapered, that are available for post top mounted luminaires. Poles vary in size, shape, height, and material, designed to fit any need.

Light Pole, 4" Fluted, Alum w/ 3-1/2" OD x 2-7/8" Long Tenon, Hand Hole & Grounding Lug



Light Pole, 4" Fluted, Alum w/ 3-1/2" OD x 2-7/8" Long Tenon, Hand Hole & Grounding Lug



Anchors:



AP-1019-GLV
Anchor Bolts Set,
3/4"-10NC



AP-1089-GLV
Anchor Bolt Cage,
3/4"-10NC

Aluminum Bases:



AP-0814-5.09
LeGrande

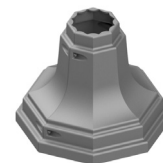


AP-0819-5.09
Manchester

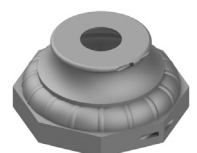
AP-0816-5.09
Hamilton



PB-5414-5.09
Octagonal



AP-0817-5.09
Oxford



Note: 1. For additional information on Bases see page T15-27 through T15-31.
2. For Anchors see sections T11 and T12.
3. See Reference Section page v for available paint colors.

This page is intentionally left blank.



Post Top Luminaire Poles

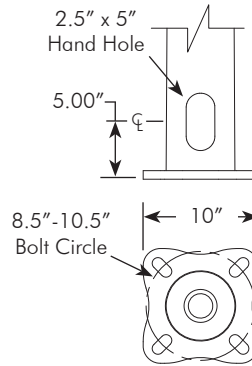
Pelco manufactures a variety of Lighting Poles, straight, fluted, and tapered, that are available for post top mounted luminaires. Poles vary in size, shape, height, and material, designed to fit any need.



Light Pole, Fluted Tapered, Steel w/ 3-1/2" OD x 3-1/2" Long Tenon, GFCI Option

AP-8700 -

Height	GFCI	Coating
8=8'	Blank=w/o Kit	GLV=Galvanized
10=10'	GFCI=w/ Kit	P__=Paint



ABS Bases:



AP-0809-5.63-13.13
Rochester II
(w/o GFCI)



AP-0810-5.81-13.13
Hamilton

Anchors:



AP-1019-GLV
Anchor Bolts Set,
3/4"-10NC



AP-1089-GLV
Anchor Bolt Cage,
3/4"-10NC

Aluminum Bases:



AP-0814-5.63
LeGrande
(w/o GFCI)

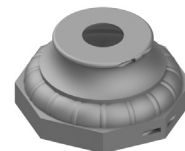


AP-0819-5.75
Manchester

AP-0816-5.75
Hamilton



AP-0817-6F
Oxford



Note: 1. For additional information on Bases see page T15-27 through T15-31.
2. For Anchors see sections T11 and T12.
3. See Reference Section page v for available paint colors.

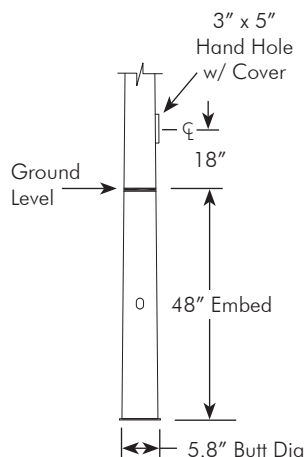
Post Top Luminaire Poles

Pelco manufactures a variety of Lighting Poles, straight, fluted, and tapered, that are available for post top mounted luminaires. Poles vary in size, shape, height, and material, designed to fit any need.

Direct Bury Light Pole, Tapered Steel, 11 Gauge 5.8" Butt x 19' Tall 3-1/2" OD x 3" Long Tenon w/ Hand Hole Cover & Grounding Lug

AP-3056 -

Coating
P__=Paint



ABS Bases:



AP-0809-4.88-5.63
Rochester II



AP-0803-4.88-5.63
Rochester I

Aluminum Bases:

Ground Level →



AP-0814-4.88
LeGrande



AP-0811-5.00
Country Club

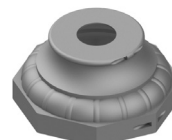


AP-0819-5.00
Manchester

AP-0816-5.00
Hamilton



AP-0817-5.25
Oxford



Note: 1. For additional information on Bases see page T15-27 through T15-31.
2. See Reference Section page v for available paint colors.

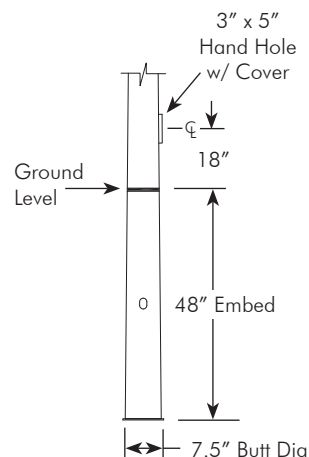


Post Top Luminaire Poles

Pelco manufactures a variety of Lighting Poles, straight, fluted, and tapered, that are available for post top mounted luminaires. Poles vary in size, shape, height, and material, designed to fit any need.

Direct Bury Light Pole, Tapered Steel, 11 Gauge **7.5" Butt x 25' Tall** **3-1/2" OD x 3" Long Tenon** **w/ Hand Hole Cover & Grounding Lug**

AP-3057 -
 P _ _ = Paint



ABS Bases:



AP-0809-6.56-7.25
Rochester II

Aluminum Bases:

Ground Level →



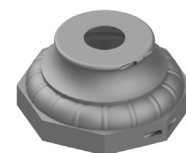
AP-0802-6.63
Ornamental



AP-0819-6.69
Manchester



AP-0816-6.75
Hamilton



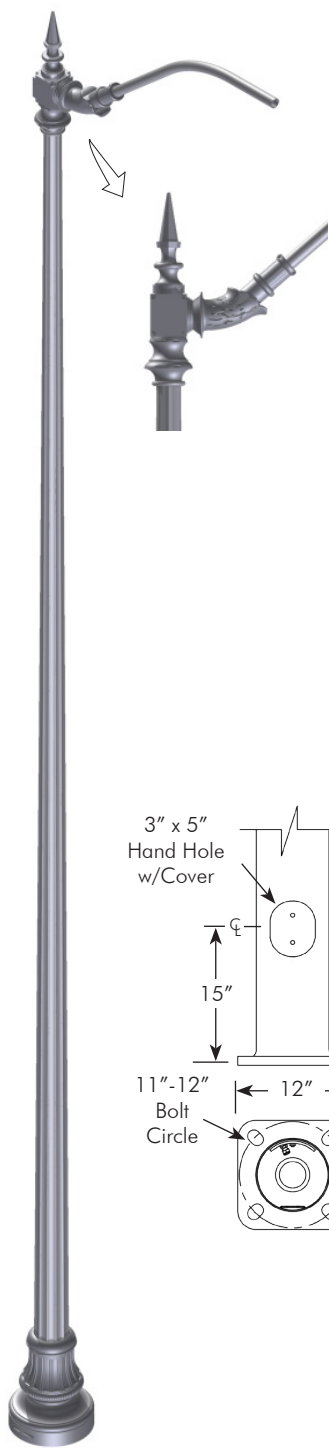
AP-0817-6.88
Oxford

Note: 1. For additional information on Bases see page T15-27 through T15-31.
 2. See Reference Section page v for available paint colors.



Majestic Roadway Luminaire Poles

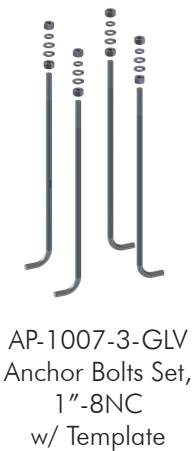
The Majestic Roadway Lighting Poles are available for single or twin luminaires and with 6' or 8' arms fabricated with a 29" rise. The fluted tapered steel pole offers great strength and durability, with the Hamilton base completing the classic decorative look.



Pole Height	Arm Length	Arm	Part Number	Allowable EPA (ft ^ 2) per arm at 90 mph with max. luminaire weight of 60 lbs	Allowable EPA (ft ^ 2) per arm at 100 mph with max. luminaire weight of 60 lbs
30'-0"	6'-0"	Single	AP-8327	7.0	5.6
	8'-0"	Single	AP-8347	4.6	3.6

Notes:
Majestic Poles come standard with Hamilton Base. Optional base w/ Riser for use with PB-5431 break-away bolts can be specify by adding -BR, i.e., AP-8327-BR-P59.
EPA=Projected area of luminaire multiplied by coefficient of drag
Compliant with AASHTO 2013

Anchors:



Aluminum Bases:

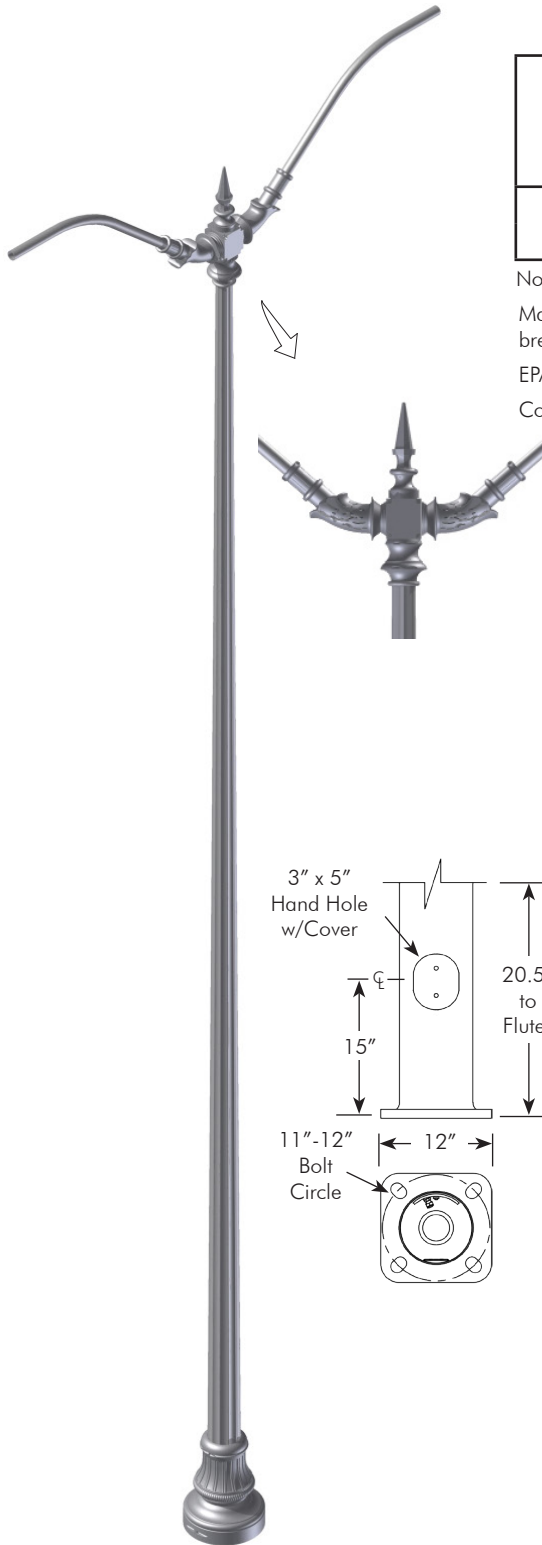


Note: 1. For additional information on Bases see page T15-27 through T15-31.
2. For Anchors see sections T11 and T12.
3. See Reference Section page v for available paint colors.



Majestic Roadway Luminaire Poles

The Majestic Roadway Lighting Poles are available for single or twin luminaires and with 6' or 8' arms fabricated with a 29" rise. The fluted tapered steel pole offers great strength and durability, with the Hamilton base completing the classic decorative look.



Pole Height	Arm Length	Arm	Part Number	Allowable EPA (ft ²) per arm at 90 mph with max. luminaire weight of 60 lbs	Allowable EPA (ft ²) per arm at 100 mph with max. luminaire weight of 60 lbs
30'-0"	6'-0"	Single	AP-8328	7.0	5.6
	8'-0"	Single	AP-8348	4.6	3.6

Notes:

Majestic Poles come standard with Hamilton Base. Optional base w/ Riser for use with PB-5431 break-away bolts can be specify by adding -BR, i.e., AP-8328-BR-P59.

EPA=Projected area of luminaire multiplied by coefficient of drag

Compliant with AASHTO 2013

Anchors:



AP-1007-3-GLV
Anchor Bolts Set,
1"-8NC
w/ Template



AP-3129-GLV
Anchor Bolt Cage,
1"-8NC

Aluminum Bases:



AP-0816-7.75
Hamilton
(Standard)



AP-0823-7.75
Hamilton w/ Riser
(Optional)

Note: 1. For additional information on Bases see page T15-27 through T15-31.

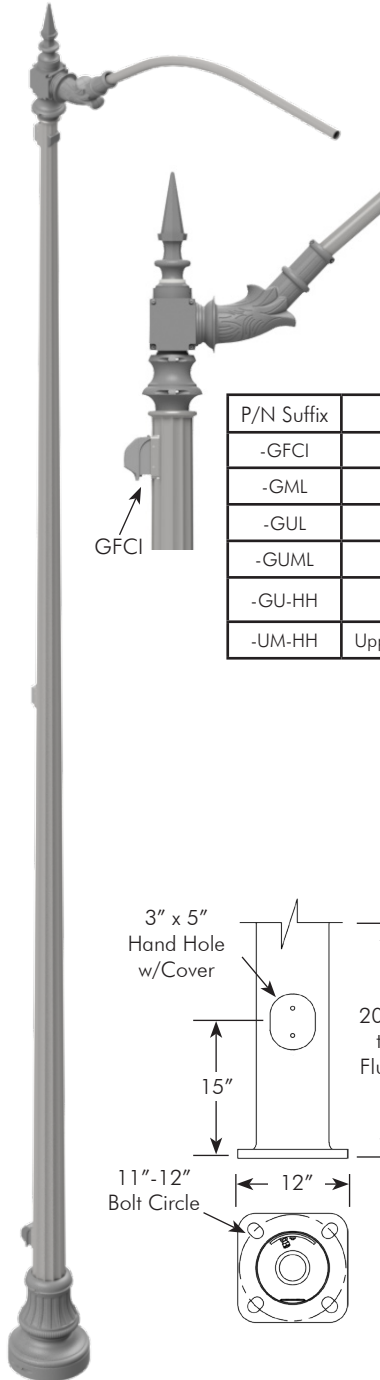
2. For Anchors see sections T11 and T12.

3. See Reference Section page v for available paint colors.

Majestic Roadway Luminaire Poles

The Majestic Roadway Lighting Poles are available for single or twin luminaires and with 6' or 8' arms fabricated with a 29" rise. The fluted tapered steel pole offers great strength and durability, with the Hamilton base completing the classic decorative look. Available with upper, middle, or lower GFCI and handle hole.

With GFCI Options



Pole Height	Arm Length	Arm	Part Number	Allowable EPA (ft ²) per arm at 90 mph with max. luminaire weight of 60 lbs	Allowable EPA (ft ²) per arm at 100 mph with max. luminaire weight of 60 lbs
20'-0"	6'-0"	Single	AP-8495	-	-
30'-0"	8'-0"	Single	AP-8381	4.6	3.6

Notes:

Majestic Poles come standard with Hamilton Base. Optional base w/ Riser for use with PB-5431 break-away bolts can be specify by adding -BR, i.e., AP-8381-BR-P59.

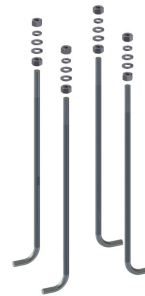
For GFCI and Hand Hole options see chart. Specify by adding suffix to part number , i.e., AP-8495-GFCI-P59 for a lower GFCI only. Lower GFCI not available with base riser option.

EPA=Projected area of luminaire multiplied by coefficient of drag

Compliant with AASHTO 2013

P/N Suffix	GFCI & Hand Hole	GFCI Qty
-GFCI	Lower GFCI only	1
-GML	Middle & Lower GFCI	2
-GUL	Upper & Lower GFCI	2
-GUML	Upper, Middle, & Lower GFCI	3
-GU-HH	Upper GFCI & Lower Hand Hole	1
-UM-HH	Upper & Middle GFCI & Lower Hand Hole	2

Anchors:



AP-1007-3-GLV
Anchor Bolts Set,
1"-8NC
w/ Template



AP-3129-GLV
Anchor Bolt Cage,
1"-8NC

Aluminum Bases:



AP-0816-7.75
Hamilton
(Standard)



AP-0823-7.75
Hamilton w/ Riser
(Optional)

Note: 1. For additional information on Bases see page T15-27 through T15-31.

2. For Anchors see sections T11 and T12.

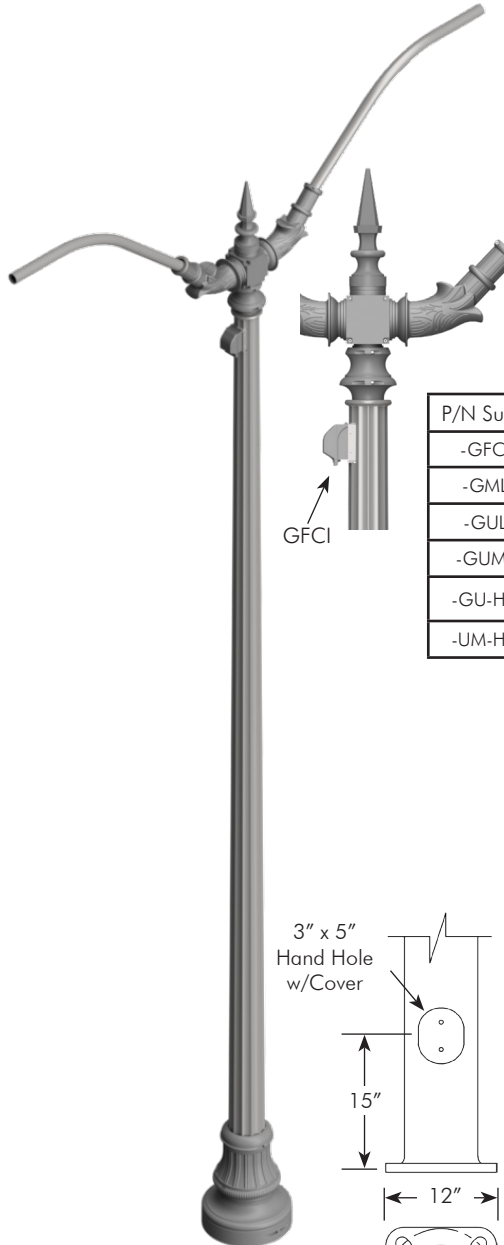
3. See Reference Section page v for available paint colors.



Majestic Roadway Luminaire Poles

The Majestic Roadway Lighting Poles are available for single or twin luminaires and with 6' or 8' arms fabricated with a 29" rise. The fluted tapered steel pole offers great strength and durability, with the Hamilton base completing the classic decorative look. Available with upper, middle, or lower GFCI and handle hole.

With GFCI Options



Pole Height	Arm Length	Arm	Part Number	Allowable EPA (ft ²) per arm at 90 mph with max. luminaire weight of 60 lbs	Allowable EPA (ft ²) per arm at 100 mph with max. luminaire weight of 60 lbs
20'-0"	6'-0"	Twin	AP-8496	-	-
30'-0"	8'-0"	Twin	AP-8382	4.6	3.6

Notes:

Majestic Poles come standard with Hamilton Base. Optional base w/ Riser for use with PB-5431 break-away bolts can be specify by adding -BR, i.e., AP-8382-BR-P59.

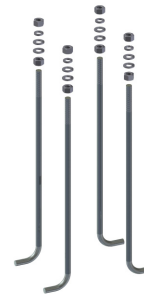
For GFCI and Hand Hole options see chart. Specify by adding suffix to part number, i.e., AP-8496-GFCI-P59 for a lower GFCI only. Lower GFCI not available with base riser option.

EPA=Projected area of luminaire multiplied by coefficient of drag

Compliant with AASHTO 2013

P/N Suffix	GFCI & Hand Hole	GFCI Qty
-GFCI	Lower GFCI only	1
-GML	Middle & Lower GFCI	2
-GUL	Upper & Lower GFCI	2
-GUML	Upper, Middle, & Lower GFCI	3
-GU-HH	Upper GFCI & Lower Hand Hole	1
-UM-HH	Upper & Middle GFCI & Lower Hand Hole	2

Anchors:



AP-1007-3-GLV
Anchor Bolts Set,
1"-8NC
w/ Template



AP-3129-GLV
Anchor Bolt Cage,
1"-8NC

Aluminum Bases:



AP-0816-7.75
Hamilton
(Standard)



AP-0823-7.75
Hamilton w/ Riser
(Optional)

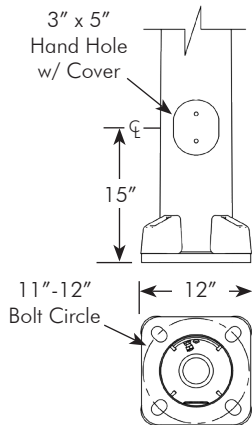
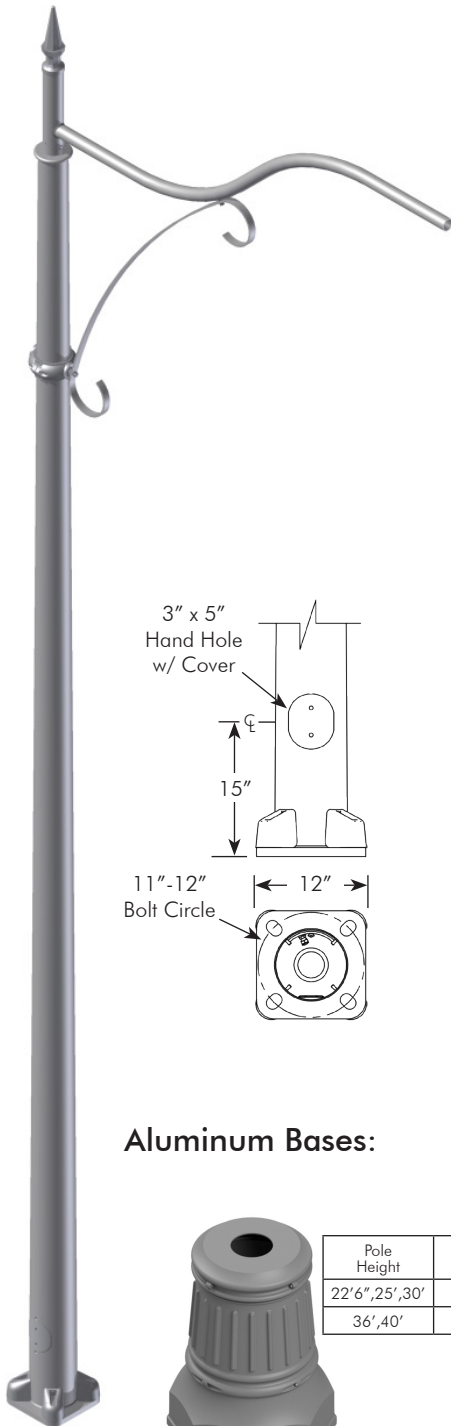
Note: 1. For additional information on Bases see page T15-27 through T15-31.

2. For Anchors see sections T11 and T12.

3. See Reference Section page v for available paint colors.

Traditional Roadway Luminaire Poles

The Traditional Roadway Luminaire Poles are range from 22-1/2' through 40' heights. They are provided with either 6' or 8' single or twin arms fabricated with a 26" rise and decorative scroll. Steel tapered poles offer an affordable graceful look that can accept a variety of decorative bases or be provided with simple nut covers.



Pole Height	Arm Length	Arm	Part Number	Allowable EPA (ft ²) per arm at 90 mph with max. luminaire weight of 60 lbs	Allowable EPA (ft ²) per arm at 100 mph with max. luminaire weight of 60 lbs
22'-6"	8'-0"	Single	AP-8489	5.0	3.9
25'-0"	8'-0"	Single	AP-8556	4.8	3.8
30'-0"	8'-0"	Single	AP-8301	4.6	3.6
35'-0"	6'-0"	Single	AP-8578	-	-
40'-0"	6'-0"	Single	AP-8577	-	-

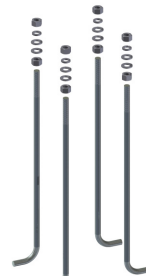
Note:

Bolt/Nut Covers are available. Specify by adding -BC in the part number, i.e., AP-8301-BC-P59

EPA=Projected area of luminaire multiplied by coefficient of drag

Compliant with AASHTO 2013

Anchors:



AP-1007-3-GLV
1"-8NC
(22'6", 25', 30' Poles)

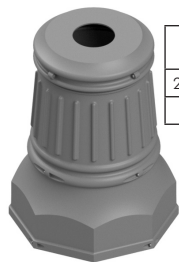


AP-3129-GLV
1"-8NC
(22'6", 25', 30' Poles)

AP-1020-GLV
1-1/4"-7NC
(36', 40' Poles)

AP-3146-GLV
1-1/4"-7NC
(36', 40' Poles)

Aluminum Bases:



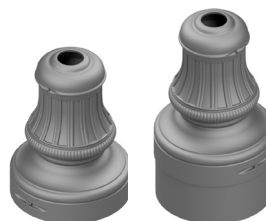
PB-5384 Rochester

Pole Height	Base ID
22'6", 25', 30'	7.69"
36', 40'	8.69"



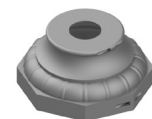
AP-0802 Ornamental

Pole Height	Base ID
22'6", 25', 30'	7.75"
36', 40'	8.75"



Hamilton

Hamilton Base	Pole Height	Base ID
AP-0816	22'6", 25', 30'	7.80"
AP-0823	36', 40'	8.69"



AP-0817 Oxford

Pole Height	Base ID
22'6", 25', 30'	8.00"
36', 40'	9.00"

Note: 1. For additional information on Bases see page T15-27 through T15-31.

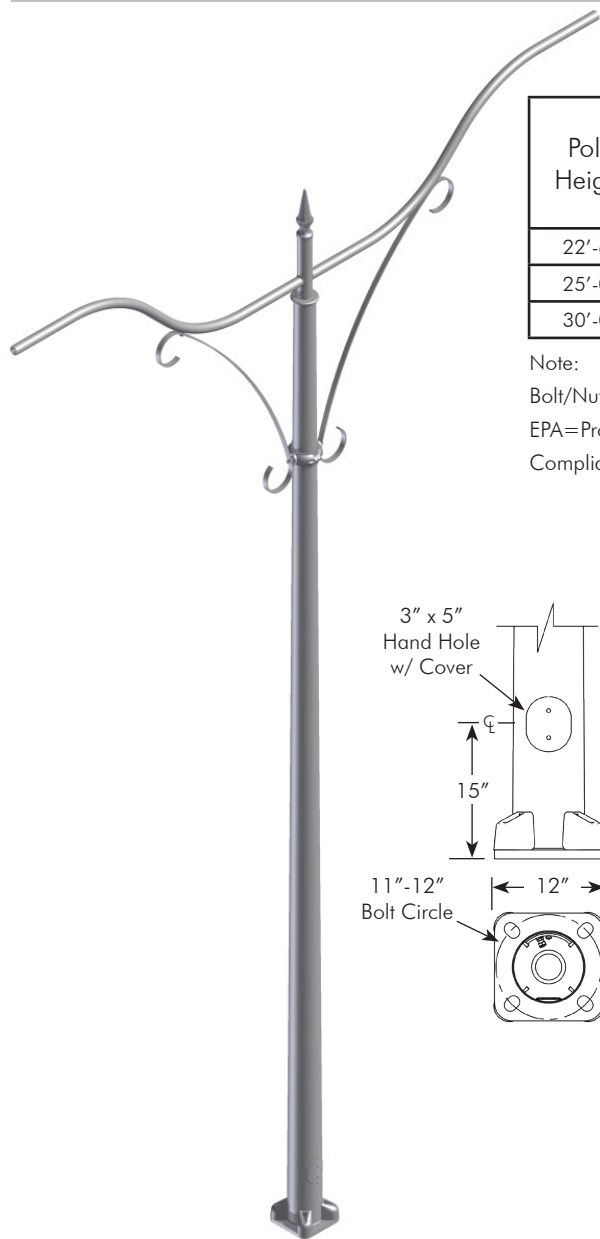
2. For Anchors see sections T11 and T12.

3. See Reference Section page v for available paint colors.



Traditional Roadway Luminaire Poles

The Traditional Roadway Luminaire Poles are range from 22-1/2' through 40' heights. They are provided with either 6' or 8' single or twin arms fabricated with a 26" rise and decorative scroll. Steel tapered poles offer an affordable graceful look that can accept a variety of decorative bases or be provided with simple nut covers.



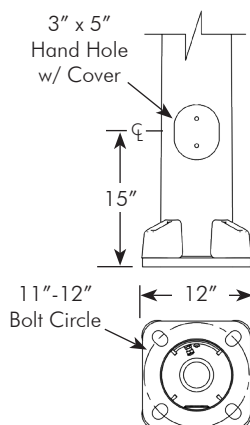
Pole Height	Arm Length	Arm	Part Number	Allowable EPA (ft ^ 2) per arm at 90 mph with max. luminaire weight of 60 lbs	Allowable EPA (ft ^ 2) per arm at 100 mph with max. luminaire weight of 60 lbs
22'-6"	8'-0"	Twin	AP-8490	5.0	3.9
25'-0"	8'-0"	Twin	AP-8563	4.8	3.8
30'-0"	8'-0"	Twin	AP-8302	4.6	3.6

Note:

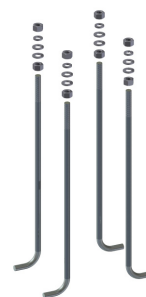
Bolt/Nut Covers are available. Specify by adding -BC in the part number, i.e., AP-8302-BC-P59

EPA=Projected area of luminaire multiplied by coefficient of drag

Compliant with AASHTO 2013



Anchors:

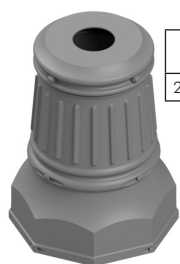


AP-1007-3-GLV
Anchor Bolt Set,
1"-8NC



AP-3129-GLV
Anchor Bolt Cage,
1"-8NC

Aluminum Bases:



PB-5384 Rochester

Pole Height	Base ID
22'6",25',30'	7.69"

Pole Height	Base ID
22'6",25',30'	7.75"



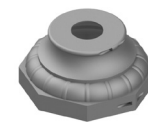
AP-0802 Ornamental

Pole Height	Base ID
22'6",25',30'	7.80"



Hamilton

Pole Height	Base ID
22'6",25',30'	8.00"



AP-0817 Oxford

Note: 1. For additional information on Bases see page T15-27 through T15-31.

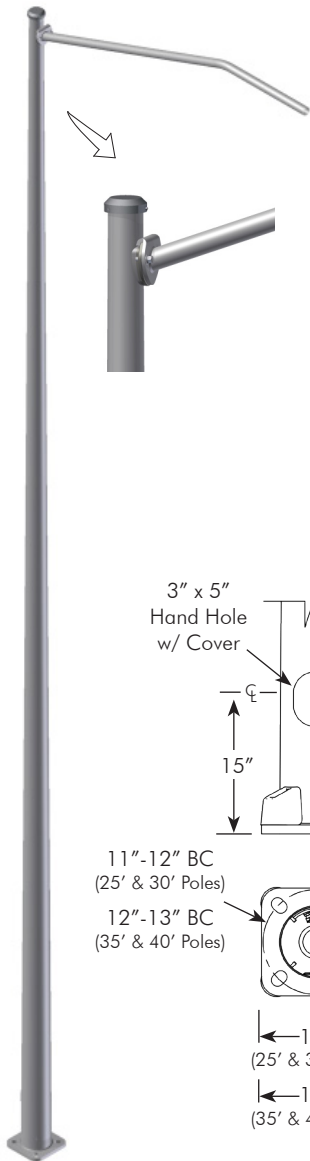
2. For Anchors see sections T11 and T12.

3. See Reference Section page v for available paint colors.



Simplex Roadway Luminaire Poles

The Simplex Roadway Luminaire Poles are available in 25' through 40' heights. They are provided with either 6' or 8' single or twin arms fabricated with a 24" rise. The steel tapered poles can accept a variety of decorative bases or be provided with simple nut covers.



Pole Height	Arm Length	Arm	Part Number	Allowable EPA (ft ²) per arm at 90 mph with max. luminaire weight of 60 lbs	Allowable EPA (ft ²) per arm at 100 mph with max. luminaire weight of 60 lbs
25'-0"	6'-0"	Single	AP-8571-25-6	6.8	5.4
	8'-0"	Single	AP-8571-25-8	4.5	3.5
30'-0"	6'-0"	Single	AP-8571-30-6	6.5	5.2
	8'-0"	Single	AP-8571-30-8	4.3	3.3
35'-0"	6'-0"	Single	AP-8571-35-6	6.3	5.0
	8'-0"	Single	AP-8571-35-8	4.1	3.2
40'-0"	6'-0"	Single	AP-8571-40-6	6.1	4.8
	8'-0"	Single	AP-8571-40-8	4.0	3.1

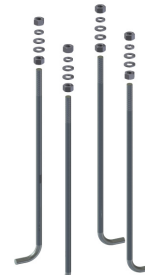
Note:

Bolt/Nut Covers are available. Specify by adding -BC in the part number, i.e., AP-8571-30-6-BC-GLV.

EPA=Projected area of luminaire multiplied by coefficient of drag

Compliant with AASHTO 2013

Anchors:



AP-1007-3-GLV
1"-8NC
(25' & 30' Poles)

AP-1020-GLV
1-1/4"-7NC
(35' & 40' Poles)



AP-3129-GLV
1"-8NC
(25' & 30' Poles)

AP-3146-GLV
1-1/4"-7NC
(35' & 40' Poles)

Aluminum Bases:



Pole Height	Base ID
25'	7.13"
30'	7.63"
35'	8.13"
40'	8.63"

PB-5384 Rochester



Pole Height	Base ID
25'	7.25"
30'	7.75"
35'	8.25"
40'	8.75"

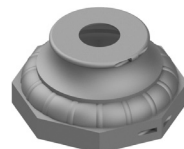
AP-0802 Ornamental



Pole Height	Base ID
25'	7.31"
30'	7.88"
35'	N/A
40'	N/A

AP-0816 Hamilton

Pole Height	Base ID
25'	7.50"
30'	8.00"
35'	8.44"
40'	9.00"



AP-0817 Oxford

Note: 1. For additional information on Bases see page T15-27 through T15-31.

2. For Anchors see sections T11 and T12.

3. See Reference Section page v for available paint colors.



Simplex Roadway Luminaire Poles

The Simplex Roadway Luminaire Poles are available in 25' through 40' heights. They are provided with either 6' or 8' single or twin arms fabricated with a 24" rise. The steel tapered poles can accept a variety of decorative bases or be provided with simple nut covers.



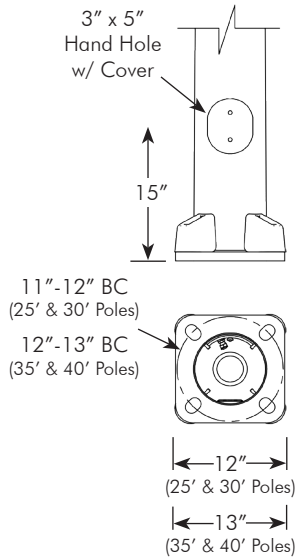
Pole Height	Arm Length	Arm	Part Number	Allowable EPA (ft ²) per arm at 90 mph with max. luminaire weight of 60 lbs	Allowable EPA (ft ²) per arm at 100 mph with max. luminaire weight of 60 lbs
25'-0"	6'-0"	Twin	AP-8572-25-6	6.8	5.4
	8'-0"	Twin	AP-8572-25-8	4.5	3.5
30'-0"	6'-0"	Twin	AP-8572-30-6	6.5	5.2
	8'-0"	Twin	AP-8572-30-8	4.3	3.3
35'-0"	6'-0"	Twin	AP-8572-35-6	6.3	5.0
	8'-0"	Twin	AP-8572-35-8	4.1	3.2
40'-0"	6'-0"	Twin	AP-8572-40-6	6.1	4.8
	8'-0"	Twin	AP-8572-40-8	4.0	3.1

Note:

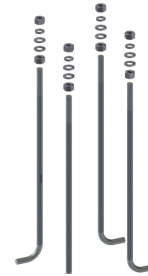
Bolt/Nut Covers are available. Specify by adding -BC in the part number, i.e., AP-8572-30-6-BC-GLV.

EPA=Projected area of luminaire multiplied by coefficient of drag

Compliant with AASHTO 2013



Anchors:



AP-1007-3-GLV
1"-8NC
(25' & 30' Poles)

AP-1020-GLV
1-1/4"-7NC
(35' & 40' Poles)



AP-3129-GLV
1"-8NC
(25' & 30' Poles)

AP-3146-GLV
1-1/4"-7NC
(35' & 40' Poles)

Aluminum Bases:



PB-5384 Rochester

Pole Height	Base ID
25'	7.13"
30'	7.63"
35'	8.13"
40'	8.63"



AP-0802 Ornamental

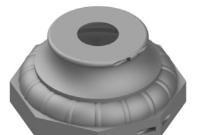
Pole Height	Base ID
25'	7.25"
30'	7.75"
35'	8.25"
40'	8.75"



AP-0816 Hamilton

Pole Height	Base ID
25'	7.31"
30'	7.88"
35'	N/A
40'	N/A

Pole Height	Base ID
25'	7.50"
30'	8.00"
35'	8.44"
40'	9.00"



AP-0817 Oxford

Note: 1. For additional information on Bases see page T15-27 through T15-31.

2. For Anchors see sections T11 and T12.

3. See Reference Section page v for available paint colors.



This page is intentionally left blank.

ABS Plastic Bases

Pelco ABS Plastic Bases are manufactured from an ultraviolet inhibited material that provides protections against U.V. degradation which ensures years of lasting beauty. A variety of styles and sizes are available. Lightweight and easy installation.



AP-0804 - $\begin{matrix} \text{Top ID} \\ \boxed{} \\ 3.5=3\text{-}1/2'' \end{matrix}$ - $\begin{matrix} \text{Bottom ID} \\ \boxed{} \\ 7.5=7\text{-}1/2'' \end{matrix}$ - PNC

Note: Top Opening: 3-1/2" max
Bottom Opening: 7-1/2" max



Rochester I Base Assy, Black ABS Plastic 41" High x 15-11/16" Across Points

AP-0803 - $\begin{matrix} \text{Top ID} \\ \boxed{} \\ 5.75=5\text{-}3/4'' \end{matrix}$ - $\begin{matrix} \text{Bottom ID} \\ \boxed{} \\ 12.0=12'' \end{matrix}$ - PNC

Note: Top Opening: 5-3/4" max
Bottom Opening: 12" max



Rochester II Base Assy, Black ABS Plastic 41" High x 19" Across Points

AP-0809 - $\begin{matrix} \text{Top ID} \\ \boxed{} \\ 9.0=9'' \end{matrix}$ - $\begin{matrix} \text{Bottom ID} \\ \boxed{} \\ 15.0=15'' \end{matrix}$ - PNC

Note: Top Opening: 9" max
Bottom Opening: 15" max



Hamilton Base Assy, Black ABS Plastic 21" High x 16-1/8" Base Dia

AP-0810 - $\begin{matrix} \text{Top ID} \\ \boxed{} \\ 6.5=6\text{-}1/2'' \end{matrix}$ - $\begin{matrix} \text{Bottom ID} \\ \boxed{} \\ 14.5=14\text{-}1/2'' \end{matrix}$ - PNC

Note: Top Opening: 6-1/2" max
Bottom Opening: 14-1/2" max

- Note: 1. Refer to individual pole pages for cross reference for proper fit of base and pole.
2. ABS Plastic Bases are manufactured from an ultraviolet inhibited material that provides protections against U.V. degradation.

Aluminum Bases

Pelco has several different Aluminum Base designs. A variety of styles and sizes are available to fit any specific requirement.



Old Town I Base Assy, Alum
23-1/2" High x 9-1/4" Across Points

AP-0801 -

Base ID

 -

Coating

2.38=2-3/8" PNC=Process No Color
2.88=2-7/8" P__=Paint
3.5=3-1/2"

Note: Top Opening: 2-3/8" min to 3-1/2" max
Bottom Opening: 7-1/2" max



Country Club Base Assy, Alum
28" High x 13-5/8" OD

AP-0811 -

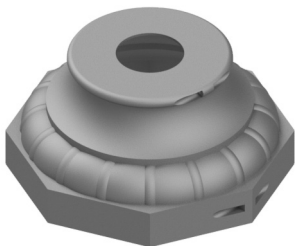
Base ID

 -

Coating

3.5=3-1/2" PNC=Process No Color
4.5=4-1/2" P__=Paint
3F= 3" Fluted

Note: Top Opening: 3-1/2" min to 4-1/2" max
Bottom Opening: 12" max



Oxford Base Assy, Alum
9" High x 19-1/4" Across Points

AP-0817 -

Base ID

 -

Coating

8.5= 8-1/2" PNC=Process No Color
4F=4" Fluted P__=Paint
6F=6" Fluted

Note: Top Opening: 3-1/2" min to 8-1/2" max
Bottom Opening: 17" max

Note: 1. Refer to individual pole pages for cross reference for proper fit of base and pole.
2. See Reference Section page v for available paint colors.



Aluminum Bases

Pelco has several different Aluminum Base designs. A variety of styles and sizes are available to fit any specific requirement.



Huntington Base Assy, Alum 15-3/4" High x 11-1/4" OD

AP-0820 -

Base ID
3.5=3-1/2"
4.0=4"

 -

Coating
PNC=Process No Color
P__=Paint

Note: Top Opening: 3" min to 4" max
Bottom Opening: 10-3/4" max



Manchester Base Assy w/ Door, Alum 27" High x 18-1/2" OD

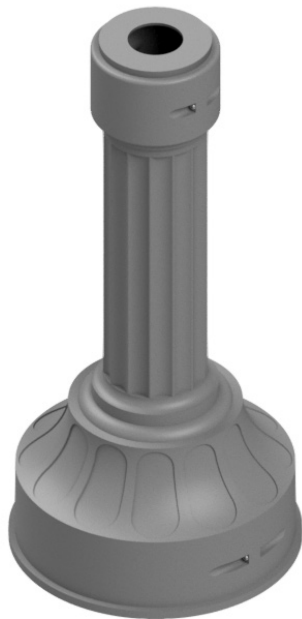
AP-0819 -

Base ID
4.0=4"
7.0=7"
4F=4" Fluted

 -

Coating
PNC=Process No Color
P__=Paint

Note: Top Opening: 4" min to 7" max
Bottom Opening: 11-1/2" max



LeGrande Base Assy, Alum 38" High x 18-1/2" OD

AP-0814 -

Base ID
3.5=3-1/2"
4.5=4-1/2"
5.5=5-1/2"
3F= 3" Fluted
4F=4" Fluted

 -

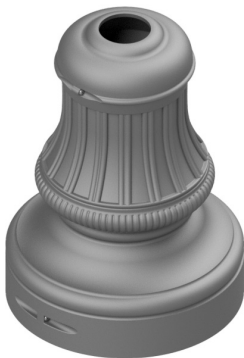
Coating
PNC=Process No Color
P__=Paint

Note: Top Opening: 3-1/2" min to 5-3/4" max
Bottom Opening: 17" max

Note: 1. Refer to individual pole pages for cross reference for proper fit of base and pole.
2. See Reference Section page v for available paint colors.

Aluminum Bases

Pelco has several different Aluminum Base designs. A variety of styles and sizes are available to fit any specific requirement.



Hamilton Base Assy, Alum 24" High x 18-1/2" OD

AP-0816 - Base ID - Coating
 4.06=4-1/16" PNC=Process No Color
 4.5=4-1/2" P__=Paint
 5.5=5-1/2"
 8.5=8-1/2" (max)

Note: Top Opening: 4" min to 8-1/2" max
 Bottom Opening: 16-3/4" max



Hamilton Base Assy w/ Riser, Alum 24" High x 18-1/2" OD

AP-0823 - Base ID - Coating
 4.06=4-1/16" PNC=Process No Color
 4.5=4-1/2" P__=Paint
 5.5=5-1/2"
 8.5=8-1/2" (max)

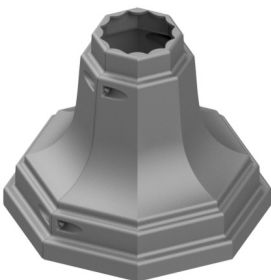
Note: Top Opening: 4" min to 8-1/2" max
 Bottom Opening: 16-3/4" max
 To be used with PB-5431 break-away bolts.



Octagonal Base Assy, Alum 14-3/16" High x 17-13/16" Across Points

PB-5416 - Base ID - Coating
 2.88=2-7/8" PNC=Process No Color
 3.5=3-1/2" P__=Paint
 4=4"
 4.5=4-1/2"
 5=5"

Note: Top Opening: 2-7/8" min to 5" max
 Bottom Opening: 16" max



Octagonal Base Assy, for 4" Fluted Pole, Alum 14" High x 17-13/16" Across Points

PB-5414 - Coating
 PNC=Process No Color
 P__=Paint

Note: Top Opening: 4" Fluted Only
 Bottom Opening: 16" max

Note: 1. Refer to individual pole pages for cross reference for proper fit of base and pole.
 2. See Reference Section page v for available paint colors.



Aluminum Bases

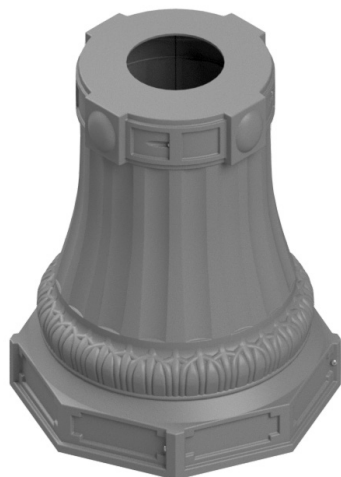
Pelco has several different Aluminum Base designs. A variety of styles and sizes are available to fit any specific requirement.



Rochester Base Assy, Alum 36" High x 28" Across Points

PB -5384 - -
 Base ID Coating
 8.0=8" PNC=Process No Color
 10.63=10-5/8" P__=Paint
 14.13=14-1/8"
 16"=16"

Note: Top Opening: 8" min to 16" max
Bottom Opening: 26" max



Ornamental Base Assy, Alum 32" High x 28-3/4" Across Points

AP-0802 - - -
 Base ID Trim Coating
 8.0=8" T__=Trim Color PNC=Process No Color
 10.0=10" P__=Paint
 12.0=12"

Note: Top Opening: 6" min to 12" max
Bottom Opening: 23" max



Square Cover Assy, 2-Piece, Alum 5-1/4" High x 16" Square

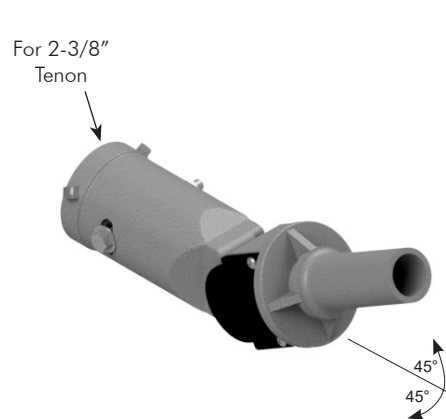
PB-5399 - -
 Base ID Coating
 4.5=4-1/2" PNC=Process No Color
 6.8=6-13/16" P__=Paint
 7.5=7-1/2"
 8.0=8-1/2"

Note: Top Opening: 4-1/2" min to 8-5/8" max
Bottom Opening: 15" max

Note: 1. Refer to individual pole pages for cross reference for proper fit of base and pole.
2. See Reference Section page v for available paint colors.

Lighting Arms

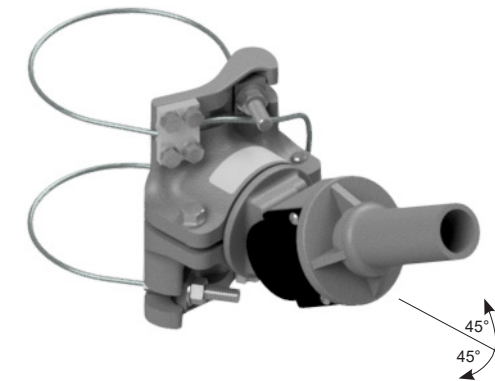
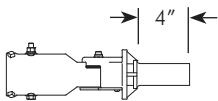
Pelco manufactures a variety of Lighting Arms that are available for single or twin luminaires. Both 1-5/8" and 2-3/8" diameter arms are available in aluminum and steel.



Lumi-Brac, Adjustable View 2-3/8" OD Tenon Mount, Alum

Tenon Coating
SP-6350 - -
Blank= 1-5/8" OD x 4" PNC= Process No Color
1.9=1-7/8" OD x 7" P__=Paint
2.38=2-3/8" OD x 7"

Note:
For mounting a single security light or Wi Fi antenna.

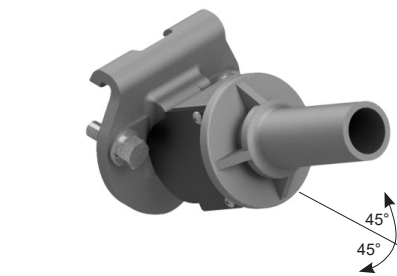
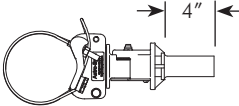


Lumi-Brac, 1-5/8" Dia Tenon, Adjustable View Stainless Cable Mount, Alum

Cable Length Coating
SP-6351 - -
See Table PNC= Process No Color
 P__=Paint

Cable Length:	62"	84"	96"	110"	120"	132"	144"	220"	280"
Maximum Pole Dia:	7.0"	10.5"	12.4"	14.6"	16.2"	18.2"	20.1"	32.2"	35.0"
Pole Dia w/ Ty-back:	4.5"	7.6"	9.6"	11.8"	13.4"	15.3"	17.2"	29.3"	35.0"

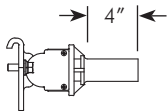
Note:
For mounting a single security light or Wi Fi antenna.



Lumi-Brac, 1-5/8" Dia Tenon, Adjustable View Simplex Mount, Alum

Coating
SP-6353 -
PNC= Process No Color
P__=Paint

Note:
For mounting a single security light or Wi Fi antenna.



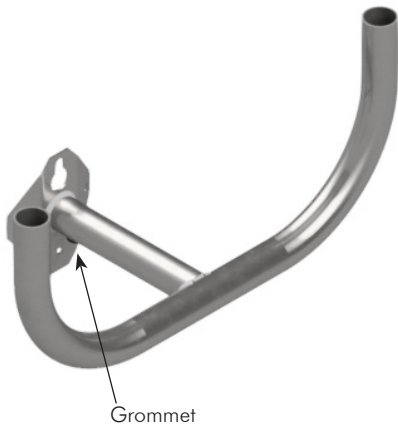
Note: 1. All assemblies are supplied standard with stainless steel cable, clamp screw, and fasteners.
2. See Reference Section page v for available paint colors.



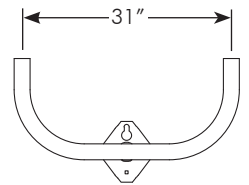
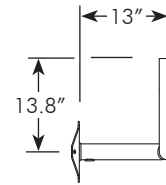
Lighting Arms

Pelco manufactures a variety of Lighting Arms that are available for single or twin luminaires. Both 1-5/8" and 2-3/8" diameter arms are available in aluminum and steel.

Mounting Bracket Assy, Double Luminaire Arm, 2-3/8" Dia, Galvanized Steel



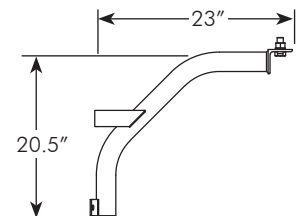
SP-6308 - ☐ Coating
GLV = Galvanized
P_ = Paint



Note:
Bullhorn mounting brackets mount with an offset from the wood pole.
Includes rubber grommet on the underneath side for wiring. Mounting hardware not included.

Mounting Arm Assy, Flood Light, 2-3/8" OD, Galvanized Steel

SP-6349-GLV



Note:
Mounting arm with a 2-3/8" OD pipe for mounting a single flood light with the 3/4"-10NC supplied hardware.

Note: 1. See Reference Section page v for available paint colors.

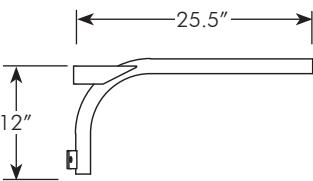
Lighting Arms

Pelco manufactures a variety of Lighting Arms that are available for single or twin luminaires. Both 1-5/8" and 2-3/8" diameter arms are available in aluminum and steel.

Luminaire Support Arm, 1-5/8" Dia, Upsweep, Galvanized Steel

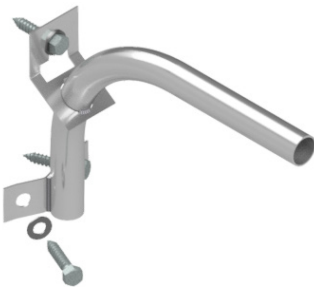


SP-6272 - Coating
GLV= Galvanized
P__=Paint



Note:
For mounting a single security light or Wi Fi antenna.
Mounting hardware not included.

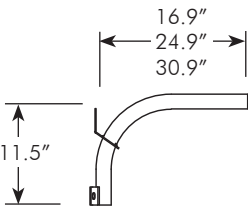
Luminaire Mounting Arm, 1-5/8" Dia w/ Hardware, 1-5/8" Dia, Alum



SP-6348 - - PNC Arm Length
16=16"
24=14"
30=30"

Part Number	EPA (ft ^2) per arm at 120 mph with max. luminaire weight of 30 lbs
SP-6348-16-PXX	3.0
SP-6348-24-PXX	2.0
SP-6348-30-PXX	3.6

Note:
For mounting a single security light or Wi Fi antenna.
Includes three 3/8"-16 x 3" hex head lag bolts and flat washers.



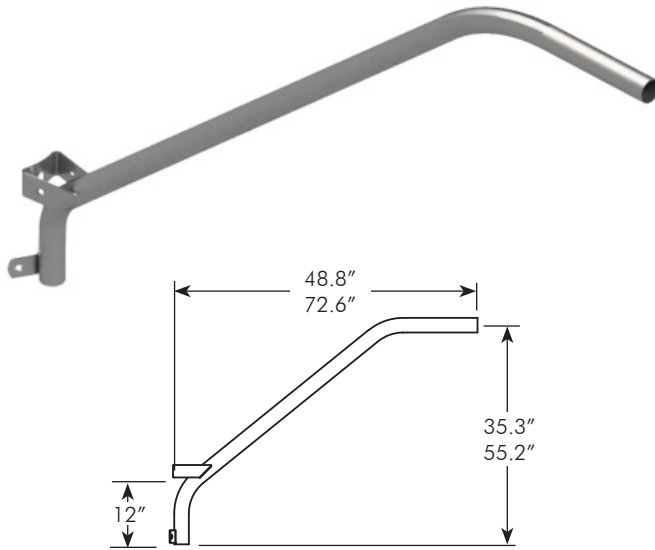
Note: 1. See Reference Section page v for available paint colors.



Lighting Arms

Pelco manufactures a variety of Lighting Arms that are available for single or twin luminaires. Both 1-5/8" and 2-3/8" diameter arms are available in aluminum and steel.

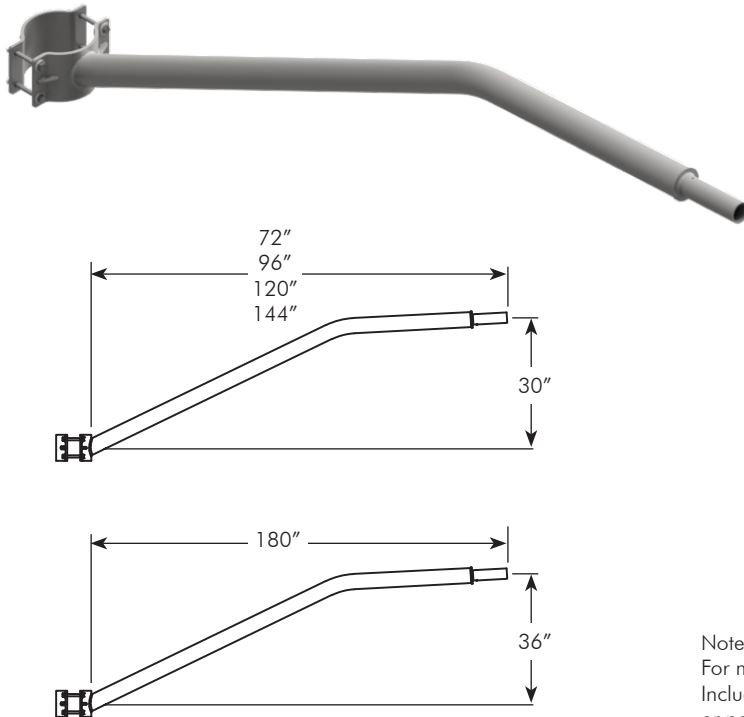
Luminaire Mounting Arm, 2-3/8" OD Galvanized Steel



SP-6309 - -
 4=4' GLV=Galvanized
 6=6' P__=Paint

Note:
For mounting a single luminaire on 2-3/8" OD x 6' schedule 10 pipe. Mounting hardware not included. Galvanized or powder coated.

Luminaire Arm, Clamp-on 3" Sch 40 w/ 2-3/8" Dia x 8" Tenon, Steel



For 4"-5" Dia Pole

AP-3001 - -
 72=6' GLV=Galvanized
 96=8' P__=Paint
 120=10'
 144=12'
 180=15'

For 5-1/2" to 7-1/2" Dia Pole

AP-3002 - -
 96=8' GLV=Galvanized
 120=10' GLV-P__=Paint
 144=12'
 180=15'

Note:
For mounting a single luminaire onto the 2-3/8" OD x 8" long tenon. Includes 1/2"-13NC hardware for attaching arm to the pole. Galvanized or powder coated.

Note: 1. See Reference Section page v for available paint colors.

This page is intentionally left blank.

Banner Brackets

Pelco has a wide variety of mounting bracket for banners and flags. Choose from ornamental hubs, banded mini-bracs, or flat mounted hubs. Banner bracs for square poles are also available, as well as articulating arms for collapsing against the pole when not in use.



Banner Mounting Bracket, Alum Hinged Single Arm,

	Pole Dia	Banner Width	Finial/Color	Coating
SH-3551	- <input type="text"/>	- <input type="text"/>	- <input type="text"/>	- <input type="text"/>
	2.38=2-3/8"	18=18"	BL__=2" Ball	P__=Paint
	2.88=2-7/8"	24=24"	ST__=Steeple	
	3.50=3-1/2"	30=30"	SL__=Spire	
	4.06=3" Fluted	36=36"	FL__=Fleur	
	4.50=4-1/2"		SE__=1-1/2" Spear	
	5.08=4" Fluted			
	5.56=5-9/16"			



Note:

Finial may be ordered as P28 Gold or same color as assembly, i.e., SH-3551-3.50-24-BL28-P33, for Gold Ball finial and Gloss Black assembly.



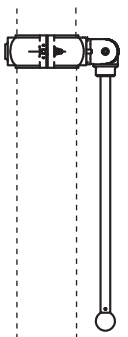
Banner Mounting Bracket, Alum Hinged Articulating Single Arm

	Pole Dia	Banner Width	Finial/Color	Coating
SH-3547	- <input type="text"/>	- <input type="text"/>	- <input type="text"/>	- <input type="text"/>
	2.38=2-3/8"	18=18"	BL__=2" Ball	P__=Paint
	2.88=2-7/8"	24=24"	ST__=Steeple	
	3.50=3-1/2"	30=30"	SL__=Spire	
	4.06=3" Fluted	36=36"	FL__=Fleur	
	4.50=4-1/2"		SE__=1-1/2" Spear	
	5.08=4" Fluted			
	5.56=5-9/16"			



Note:

Finial may be ordered as P28 Gold or same color as assembly, i.e., SH-3547-3.50-24-BL28-P33, for Gold Ball finial and Gloss Black assembly.



Banner Mounting Bracket, Alum Hinged Double Arm,

	Pole Dia	Banner Width	Banner Width	Finial/Color	Coating
SH-3556	- <input type="text"/>	- <input type="text"/>	- <input type="text"/>	- <input type="text"/>	- <input type="text"/>
	2.38=2-3/8"	18=18"	18=18"	BL__=2" Ball	P__=Paint
	2.88=2-7/8"	24=24"	20=21"	ST__=Steeple	
	3.50=3-1/2"	30=30"	24=24"	SL__=Spire	
	4.06=3" Fluted	36=36"	30=30"	FL__=Fleur	
	4.50=4-1/2"		36=36"	SE__=1-1/2" Spear	
	5.08=4" Fluted				
	5.56=5-9/16"				



Note:

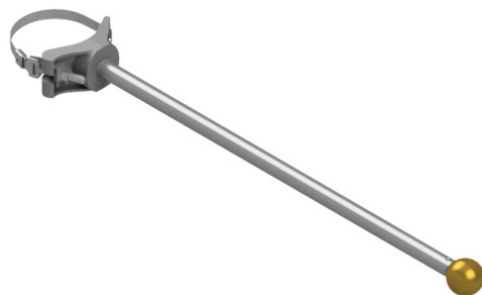
Finial may be ordered as P28 Gold or same color as assembly, i.e., SH-3556-3.50-24-24-BL28-P33, for Gold Ball finial and Gloss Black assembly.

Note: 1. 2 bracket assemblies are required for mounting a banner.

2. See Reference Section page v for available paint colors.

Banner Brackets

Pelco has a wide variety of mounting bracket for banners and flags. Choose from ornamental hubs, banded mini-bracs, or flat mounted hubs. Banner bracs for square poles are also available, as well as articulating arms for collapsing against the pole when not in use.



Banner Mounting Bracket, Alum Band Mini-Brac

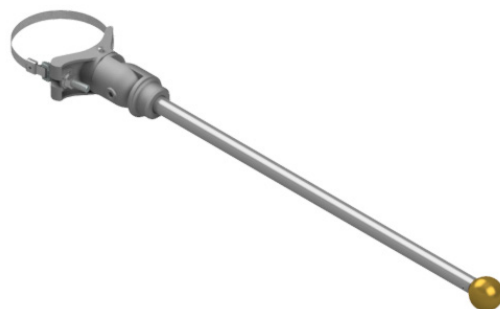
SH-3520 - - - -

18=18"	29=29"	BL__=2" Ball	P__=Paint
24=24"	42=42"	ST__=Steeple	
30=30"	29PB=29" Painted	SL__=Spire	
36=36"	42PB=42" Painted	FL__=Fleur	
		SE__=1-1/2" Spear	

Band Length:	29"	42"
Maximum Pole Dia:	7.3"	11.5"

Note:

Finial may be ordered as P28 Gold or same color as assembly, i.e., SH-3520-42PB-24-BL28-P33, for Gold Ball finial and Gloss Black assembly. If painted band is required, band will be painted same color as assembly.



Banner Mounting Bracket, Alum Band Mini-Brac, Articulating Arm

SH-3525 - - - -

18=18"	29=29"	BL__=2" Ball	P__=Paint
24=24"	42=42"	ST__=Steeple	
30=30"	29PB=29" Painted	SL__=Spire	
36=36"	42PB=42" Painted	FL__=Fleur	
		SE__=1-1/2" Spear	

Band Length:	29"	42"
Maximum Pole Dia:	7.3"	11.5"

Note:

Finial may be ordered as P28 Gold or same color as assembly, i.e., SH-3551-3.50-24-BL28-P33, for Gold Ball finial and Gloss Black assembly. If painted band is required, band will be painted same color as assembly.



LIGHTING & POLES

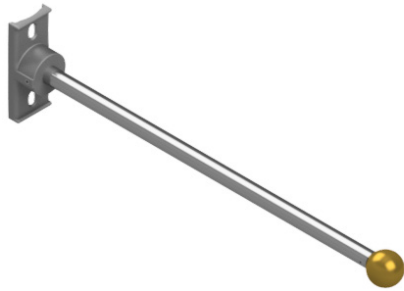


Note: 1. 2 bracket assemblies are required for mounting a banner.
2. See Reference Section page v for available paint colors.



Banner Brackets

Pelco has a wide variety of mounting bracket for banners and flags. Choose from ornamental hubs, banded mini-bracs, or flat mounted hubs. Banner bracs for square poles are also available, as well as articulating arms for collapsing against the pole when not in use.



Banner Mounting Bracket, Alum Universal Hub Mount

Banner Width	Finial/Color	Coating
SH-3523 - <input type="text"/>	<input type="text"/>	<input type="text"/>
18=18"	BL_ =2" Ball	P_ =Paint
24=24"	ST_ =Steeple	
30=30"	SL_ =Spire	
36=36"	FL_ =Fleur	
	SE_ =1-1/2" Spear	



Note:

Finial may be ordered as P28 Gold or same color as assembly, i.e., SH-3523-24-BL28-P33, for Gold Ball finial and Gloss Black assembly.



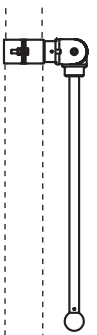
Banner Mounting Bracket, Alum For Square Poles, Articulating Arm

Pole Size	Banner Width	Finial/Color	Coating
SH-3532 - <input type="text"/>	<input type="text"/>	<input type="text"/>	<input type="text"/>
4=4" Square	18=18"	BL_ =2" Ball	P_ =Paint
5=2-7/8" Square	24=24"	ST_ =Steeple	
6.63=6-5/8" Square	30=30"	SL_ =Spire	
	36=36"	FL_ =Fleur	
		SE_ =1-1/2" Spear	



Note:

Finial may be ordered as P28 Gold or same color as assembly, i.e., SH-3532-4-24-BL28-P33, for Gold Ball finial and Gloss Black assembly.



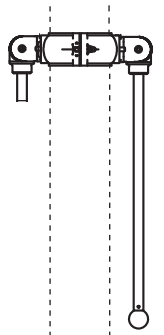
Banner & Flag Mounting Bracket, Alum Articulating Double Arm

Pole Dia	Banner Width	Finial/Color	Coating
SH-3571 - <input type="text"/>	<input type="text"/>	<input type="text"/>	<input type="text"/>
2.38=2-3/8"	18=18"	BL_ =2" Ball	P_ =Paint
2.88=2-7/8"	24=24"	ST_ =Steeple	
3.50=3-1/2"	30=30"	SL_ =Spire	
4.06=3" Fluted	36=36"	FL_ =Fleur	
4.50=4-1/2"		SE_ =1-1/2" Spear	
5.08=4" Fluted			
5.56=5-9/16"			



Note:

Finial may be ordered as P28 Gold or same color as assembly, i.e., SH-3571-3.50-24-BL28-P33, for Gold Ball finial and Gloss Black assembly.



Note: 1. 2 bracket assemblies are required for mounting a banner.

2. See Reference Section page v for available paint colors.

Flag Mounts

Pelco has a wide variety of mounting bracket for banners and flags. Choose from ornamental hubs, banded mini-bracs, or flat mounted hubs. Banner bracs for square poles are also available, as well as articulating arms for collapsing against the pole when not in use.

Flag Mount, Hinged Articulating Serrated, Alum



SH-3549 - Pole Dia - Coating
2.88=2-7/8"
3.50=3-1/2"
4.06=3" Fluted
4.50=4-1/2"
5.08=4" Fluted
5.56=5-9/16"
P__=Paint

Flag Mount, 2-Way Articulating Serrated, Alum



SH-3561 - Pole Dia - Coating
2.88=2-7/8"
3.50=3-1/2"
4.06=3" Fluted
4.50=4-1/2"
5.08=4" Fluted
5.56=5-9/16"
P__=Paint

Flag Mount, Articulating Serrated, Alum Band Mini-Brac

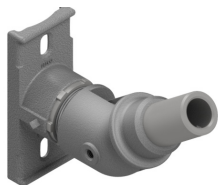


SH-3539 - BandLength/Painted - Coating
29=29"
42=42"
29PB=29" Painted
42PB=42" Painted
P__=Paint

Band Length:	29"	42"
Maximum Pole Dia:	7.3"	11.5"

Note:
If painted band is required, band will be painted same color as assembly.

Flag Mount w/ Articulating Serated, Alum Universal Hub



SH-3538 - Coating
P__=Paint

Note: 1. 2 bracket assemblies are required for mounting a banner.
2. See Reference Section page v for available paint colors.



Pole Accessories

Pelco has a wide variety of mounting bracket for banners and flags. Choose from ornamental hubs, banded mini-bracs, or flat mounted hubs. Banner bracs for square poles are also available, as well as articulating arms for collapsing against the pole when not in use.



Flag Rod Assy, Alum

AP-7380 - Rod Length - Finial/Color - Coating

42=42" BL__=2" Ball P__=Paint
52=52" SE__=1-1/2" Spear
SI__=Spire
ST__=Steeple
FL__=Fleur



Note:

Finial may be ordered as P28 Gold or same color as assembly, i.e., AP-7380-42-ST28-P33, for Gold Ball Steeple finial and Gloss Black assembly.



Plant Hanger Rod Assy, Alum

AP-7386 - Rod Length - Finial/Color - Coating

18=18" BL__=2" Ball P__=Paint
24=24" SE__=1-1/2" Spear
30=30" SI__=Spire
ST__=Steeple
FL__=Fleur



Note:

Finial may be ordered as P28 Gold or same color as assembly, i.e., AP-7386-18-BL28-P33, for Gold Ball Ball finial and Gloss Black assembly.



AP-7239 - Coating

P__=Paint

Break-a-way Coupler, 1"-8NC, Alum For Banner Bracs



AP-5105 - Coating

P__=Paint

Mounting Kit, 1" Tube Collar, Alum For Rigid Signs



AP-5132 - Coating

P__=Paint

Mounting Kit, 1" Tube Collar, Alum For Free-Swinging Signs



AP-5110 - Coating

P__=Paint

Mounting Kit, 1" Tube Collar, Alum For Plant Hanger

Note: 1. See Reference Section page v for available paint colors.

This page is intentionally left blank.