

## Aluminum Slip Fitter Assemblies, Cast Nipple

Pelco's Post Top Slip Fitters are available in aluminum, bronze, and iron, 1-1/2" NPS, Tri-Bolt or Tri-Stud. Post Top Terminal Compartments are also available in aluminum, bronze, and iron and are supplied with a 12-circuit terminal strip or block.



SE-3054  
Signal Closure Kit



### Post Top Assy, 1-Way Slip Fitter, Alum for 2-7/8" OD Pole Cast Nipple

SE-3279 -   
Coating  
PNC=Process No Color  
P\_\_=Paint



SE-3003  
Signal Mounting Kit



### Post Top Assy, 1-Way Offset Slip Fitter, Alum for 4-1/2" OD Pole Cast Nipple

SE-3310 -   
Coating  
PNC=Process No Color  
P\_\_=Paint



SE-3003  
Signal Mounting Kit



### Post Top Assy, 1-Way Slip Fitter, Alum for 4-1/2" OD Pole Cast Nipple

SE-3311 -   
Coating  
PNC=Process No Color  
P\_\_=Paint



SE-3003  
Signal Mounting Kit



### Post Top Assy, 1-Way w/ 2-Way Slip Fitter, Alum for 4-1/2" OD Pole Cast Nipple

SE-3037 -   
Coating  
PNC=Process No Color  
P\_\_=Paint



Note: 1. All assemblies supplied standard with stainless steel fasteners.  
2. See Reference Section v for available paint colors.

# Aluminum Slip Fitter Assemblies

Pelco's Post Top Slip Fitters are available in aluminum, bronze, and iron, 1-1/2" NPS, Tri-Bolt or Tri-Stud. Post Top Terminal Compartments are also available in aluminum, bronze, and iron and are supplied with a 12-circuit terminal strip or block. Designed to fit a 4-1/2" OD pole.



SE-4111-SS  
Hardware Kit

## Post Top Assy, 1-Way, Alum for 4-1/2" OD Pole Tri-Bolt & Cast Nipple

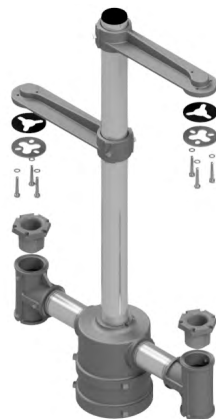
SE-3012

Signal  
Section

Coating

1=1 Sec  
2=2 Sec  
3=3 Sec  
4=4 Sec  
5=5 Sec

PNC=Process No Color  
P\_\_=Paint



SE-4111-SS  
Hardware Kit

SE-3005  
Lower Arm Assy

## Post Top Assy, 2-Way Variable, Alum for 4-1/2" OD Pole Tri-Bolt & Cast Nipple

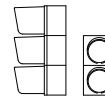
SE-3116

Signal  
Section

Coating

1=1 Sec  
2=2 Sec  
3=3 Sec  
4=4 Sec  
5=5 Sec

PNC=Process No Color  
P\_\_=Paint



SE-3004  
Upper Arm Assy

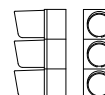
SE-3005  
Lower Arm Assy

## Slip Fitter Assy, 2-Way 16-1/2" CTC, Alum for 4-1/2" OD Pole Cast Nipple

SE-3089

Coating

PNC=Process No Color  
P\_\_=Paint



Note: 1. All assemblies are supplied standard with stainless steel slotted washer and fasteners.  
2. See Reference Section v for available paint colors.

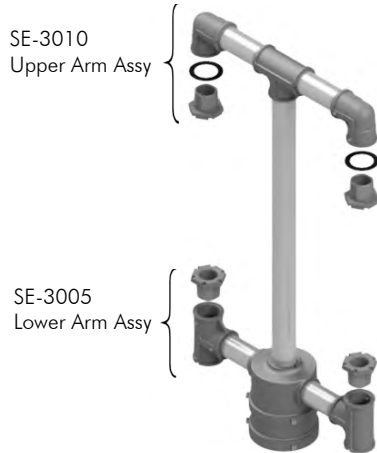


**RIGID POST TOP**



## Aluminum Slip Fitter Assemblies, Cast Nipple

Pelco's Post Top Slip Fitters are available in aluminum, bronze, and iron, 1-1/2" NPS, Tri-Bolt or Tri-Stud. Post Top Terminal Compartments are also available in aluminum, bronze, and iron and are supplied with a 12-circuit terminal strip or block. Designed to fit a 4-1/2" OD pole.



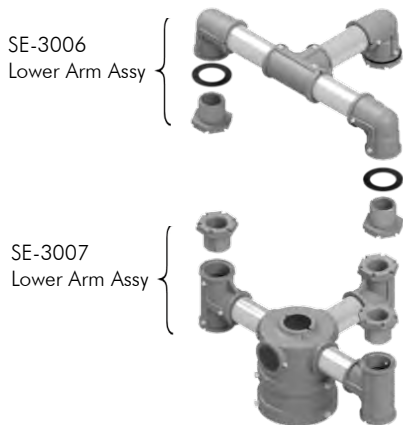
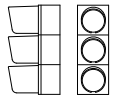
**Post Top Assy, 2-Way 16-1/2" CTC, Alum  
for 4-1/2" OD Pole, Cast Nipple**

SE-3053 -  -

Signal Section      Coating

1=1 Sec  
2=2 Sec  
3=3 Sec  
4=4 Sec  
5=5 Sec

PNC=Process No Color  
P\_\_=Paint

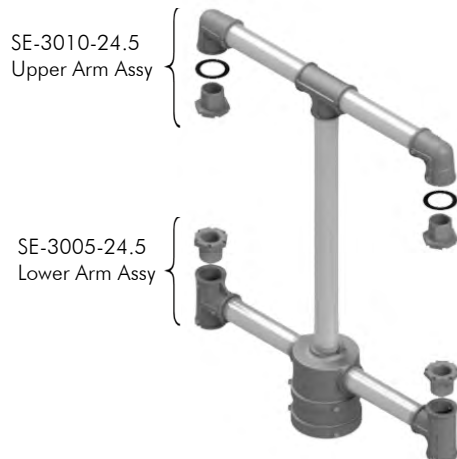
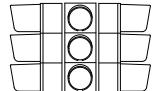


**Post Top Assy, 3-Way 16-1/2" CTC, Alum  
for 4-1/2" OD Pole, Cast Nipple**

SE-3090 -

Coating

PNC=Process No Color  
P\_\_=Paint

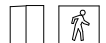


**Post Top Assy, 2-Way ICC Ped 24-1/2" CTC, Alum  
for 4-1/2" OD Pole, Cast Nipple**

SE-3257 -

Coating

PNC=Process No Color  
P\_\_=Paint



Note: 1. All assemblies are supplied standard with stainless steel slotted washer and fasteners.  
2. See Reference Section v for available paint colors.

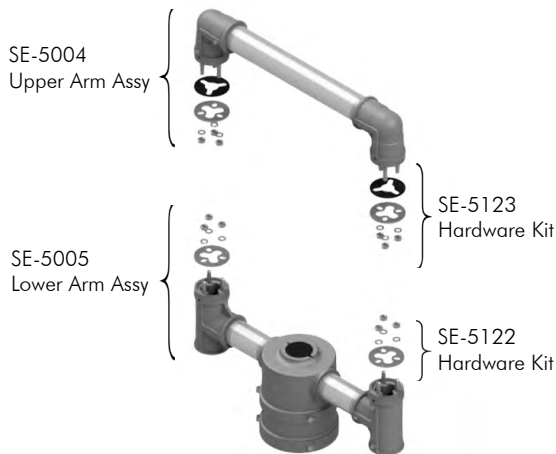
# Aluminum Slip Fitter Assemblies, Tri-Stud

Pelco's Post Top Slip Fitters are available in aluminum, bronze, and iron, 1-1/2" NPS, Tri-Bolt or Tri-Stud. Post Top Terminal Compartments are also available in aluminum, bronze, and iron and are supplied with a 12-circuit terminal strip or block. Designed to fit a 4-1/2" OD pole.



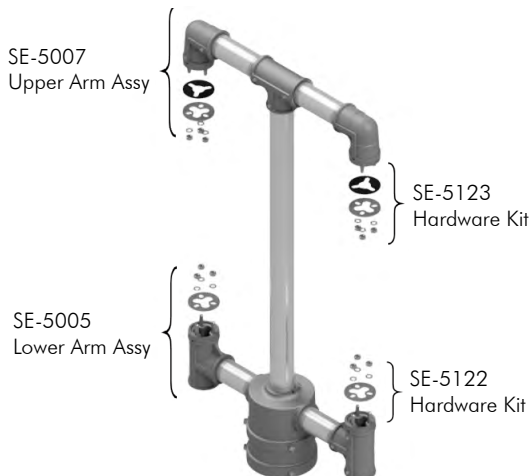
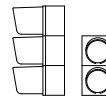
## Post Top Assy, 1-Way, Alum for 4-1/2" OD Pole Tri-Stud

SE-5016 -  Coating  
PNC=Process No Color  
P\_\_=Paint



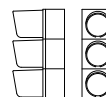
## Post Top Assy, 2-Way 16-1/2" CTC, Alum for 4-1/2" OD Pole Tri-Stud

SE-5006 -  Coating  
PNC=Process No Color  
P\_\_=Paint



## Post Top Assy, 2-Way 16-1/2" CTC, Alum for 4-1/2" OD Pole Tri-Stud

SE-5008 -  -  Coating  
Signal Section  
1=1 Sec  
2=2 Sec  
3=3 Sec  
4=4 Sec  
5=5 Sec  
PNC=Process No Color  
P\_\_=Paint



Note: 1. All assemblies are supplied standard with stainless steel slotted washer and fasteners.  
2. See Reference Section v for available paint colors.



**RIGID POST TOP**



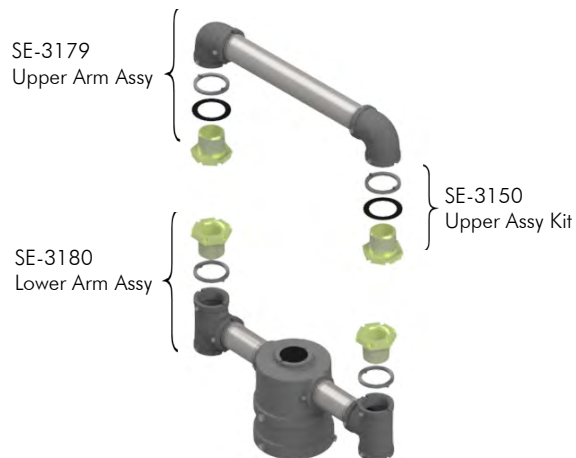
# Iron Slip Fitter Assemblies, Cast Nipple

Pelco's Post Top Slip Fitters are available in aluminum, bronze, and iron, 1-1/2" NPS, Tri-Bolt or Tri-Stud. Post Top Terminal Compartments are also available in aluminum, bronze, and iron and are supplied with a 12-circuit terminal strip or block. Designed to fit a 4-1/2" OD pole.



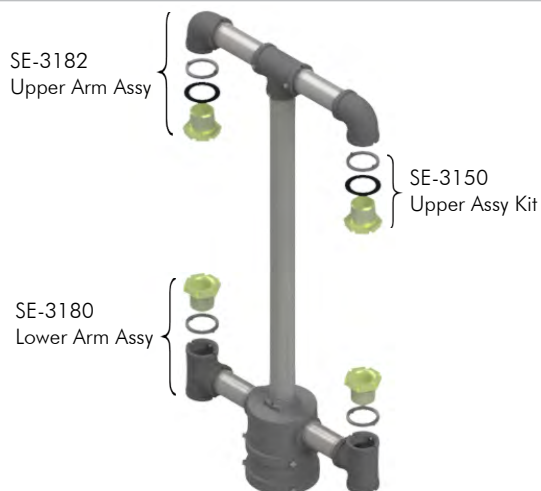
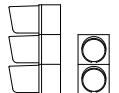
## Post Top Assy, 1-Way w/ 2-Way Slip Fitter, Iron for 4-1/2" OD Pole Cast Nipple

SE-3177 -  Coating  
P\_\_=Paint



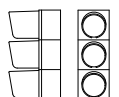
## Post Top Assy, 2-Way 16-1/2" CTC, Iron for 4-1/2" OD Pole Cast Nipple

SE-3181 -  Coating  
P\_\_=Paint



## Post Top Assy, 2-Way 16-1/2" CTC, Iron for 4-1/2" OD Pole Cast Nipple

SE-3183 -  Signal Section -  Coating  
P\_\_=Paint  
1=1 Sec  
2=2 Sec  
3=3 Sec  
4=4 Sec  
5=5 Sec



Note: 1. All assemblies are supplied standard with stainless steel fasteners.  
2. See Reference Section v for available paint colors.



This page is intentionally left blank.



## Slip Fitters, Alum

Pelco's aluminum Post Top Slip Fitters are available in a one-way, offset one-way, or a two, three, or four-way configuration. Designed to fit a 4-1/2" OD Pole.



**Slip Fitter, 1-Way for 4-1/2" OD Pole, Alum**

SE-3106 -   
Coating  
PNC=Process No Color  
P\_\_=Paint



**Slip Fitter, 1-Way Offset for 4-1/2" OD Pole, Alum**

SE-3107 -   
Coating  
PNC=Process No Color  
P\_\_=Paint



**Slip Fitter, 1 & 2-Way for 4-1/2" OD Pole, Alum**

SE-3002 -   
Coating  
PNC=Process No Color  
P\_\_=Paint



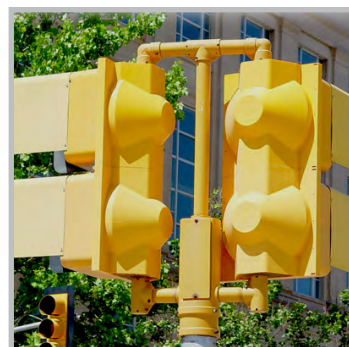
**Slip Fitter, 3 & 4-Way for 4-1/2" OD Pole, Alum**

SE-3029 -   
Coating  
PNC=Process No Color  
P\_\_=Paint

Note: 1. All assemblies are supplied standard with stainless steel fasteners.  
2. See Reference Section v for available paint colors.

## Slip Fitters, Iron

Pelco's iron Post Top Slip Fitters are available in a one, two, three, or four-way configuration. Designed to fit a 4-1/2" OD pole.



**Slip Fitter, 1-Way for 4-1/2" OD Pole, Iron  
Serrated Top Port**

SE-4431 -   
Coating  
PNC=Process No Color  
P\_\_=Paint



**Slip Fitter, 1 & 2-Way for 4-1/2" OD Pole, Iron**

SE-3175 -   
Coating  
P\_\_=Paint



**Slip Fitter, 3 & 4-Way for 4-1/2" OD Pole, Iron**

SE-3176 -   
Coating  
P\_\_=Paint

**RIGID POST TOP**



Note: 1. All assemblies are supplied standard with stainless steel fasteners.  
2. See Reference Section v for available paint colors.





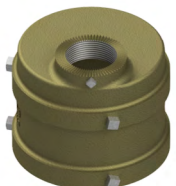
## Slip Fitters, Bronze

Bronze Post Top Slip Fitters are available in a one-way, offset one-way, or a two-way configuration. Pelco's bronze slip fitters are cast with top port serrations which eliminates the need for a locking. Designed to fit a 4-1/2" OD pole



**Slip Fitter, 1-Way for 4-1/2" OD Pole, Bronze Serrated Top Port**

SE-4424 -  Coating  
PNC=Process No Color  
P\_\_=Paint



**Slip Fitter, 1-Way Offset for 4-1/2" OD Pole, Bronze Serrated Top Port**

SE-4425 -  Coating  
PNC=Process No Color  
P\_\_=Paint



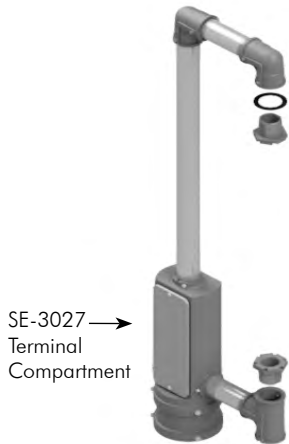
**Slip Fitter, 1 & 2-Way for 4-1/2" OD Pole, Bronze Serrated Top Port**

SE-4423 -  Coating  
PNC=Process No Color  
P\_\_=Paint

Note: 1. All assemblies are supplied standard with stainless steel fasteners.  
2. See Reference Section v for available paint colors.

# Aluminum Terminal Compartment Assemblies

Pelco's Post Top Slip Fitters are available in aluminum, bronze, and iron, 1-1/2" NPS, Tri-Bolt or Tri-Stud. Post Top Terminal Compartments are available in aluminum or bronze and are supplied with a 12-circuit terminal strip or block. Designed to fit a 4-1/2" OD pole.

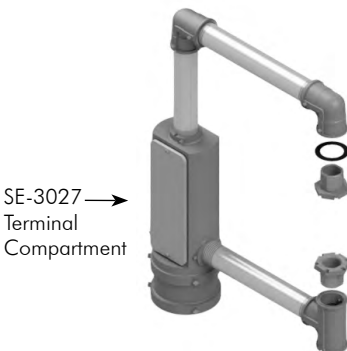


**Terminal Compartment Assy, 1-Way, Alum  
for 4-1/2" OD Pole  
Cast Nipple**

SE-3270 -  -

Signal Section  
1=1 Sec  
2=2 Sec  
3=3 Sec  
4=4 Sec  
5=5 Sec

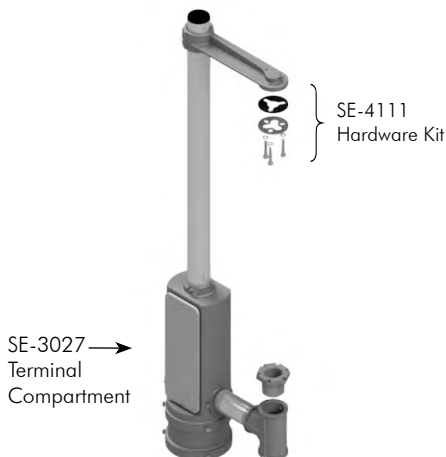
Coating  
PNC=Process No Color  
P\_\_=Paint



**Terminal Compartment Assy, 1-Way ICC Ped, Alum  
for 4-1/2" OD Pole  
Cast Nipple**

SE-3271 -

Coating  
PNC=Process No Color  
P\_\_=Paint



**Terminal Compartment Assy, 1-Way, Alum  
for 4-1/2" OD Pole  
Tri-Bolt & Cast Nipple**

SE-3013 -  -

Signal Section  
1=1 Sec  
2=2 Sec  
3=3 Sec  
4=4 Sec  
5=5 Sec

Coating  
PNC=Process No Color  
P\_\_=Paint



Note: 1. All assemblies are supplied standard with stainless steel slotted washer and fasteners.  
2. Terminal Compartments supplied standard with plastic door, aluminum door available.  
3. See Reference Section v for available paint colors.

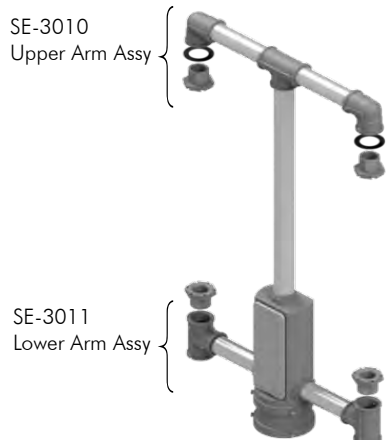


**RIGID POST TOP**



# Aluminum Terminal Compartment Assemblies

Pelco's Post Top Slip Fitters are available in aluminum, bronze, and iron, 1-1/2" NPS, Tri-Bolt or Tri-Stud. Post Top Terminal Compartments are available in aluminum or bronze and are supplied with a 12-circuit terminal strip or block. Designed to fit a 4-1/2" OD pole.

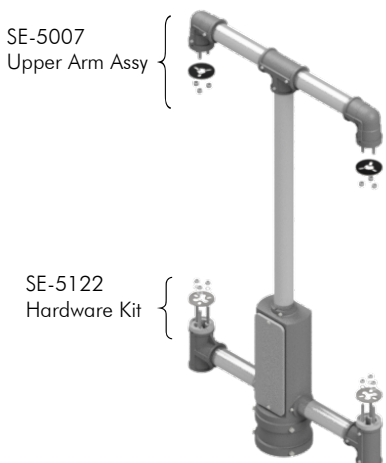
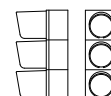


## Terminal Compartment Assy, 2-Way, Alum 21" CTC for 4-1/2" OD Pole Cast Nipple

SE-3048 -  -

Signal Section: 1=1 Sec, 2=2 Sec, 3=3 Sec, 4=4 Sec, 5=5 Sec

Coating: PNC=Process No Color, P\_\_=Paint

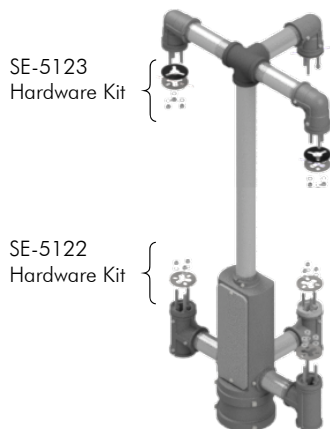
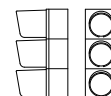


## Terminal Compartment Assy, 2-Way, Alum 21" CTC for 4-1/2" OD Pole Tri-Stud

SE-5187 -  -

Signal Section: 1=1 Sec, 2=2 Sec, 3=3 Sec, 4=4 Sec, 5=5 Sec

Coating: PNC=Process No Color, P\_\_=Paint

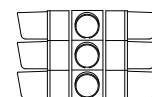


## Terminal Compartment Assy, 3-Way, Alum 16-1/2" CTC for 4-1/2" OD Pole Tri-Stud

SE-5231 -  -

Signal Section: 3=3 Sec, 4=4 Sec

Coating: PNC=Process No Color, P\_\_=Paint



Note: 1. All assemblies are supplied standard with stainless steel slotted washer and fasteners.  
2. Terminal Compartments supplied standard with plastic door, aluminum door available.  
3. See Reference Section v for available paint colors.

# Terminal Compartments

## Aluminum

Pelco's aluminum Post Top Terminal Compartments are available in a 2-way or 3-way configuration. Each are supplied standard with a 12-circuit terminal strip and an ABS plastic door. Designed to fit a 4-1/2" OD pole.

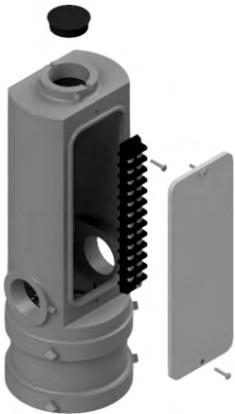


Terminal Compartment Assy, Vertical, Alum  
2-Way Post Top for 4-1/2" OD Pole

SE-3027 -

Coating  
PNC=Process No Color  
P\_\_=Paint

Note:  
Plastic door standard, aluminum door available.



Terminal Compartment Assy, Vertical, Alum  
3-Way Post Top for 4-1/2" OD Pole

SE-3074 -

Coating  
PNC=Process No Color  
P\_\_=Paint

Note:  
Plastic door standard, aluminum door available.



Rear Port

Note: 1. All assemblies are supplied standard with stainless steel fasteners.  
2. Terminal Compartments supplied standard with plastic door, aluminum door available.  
3. See Reference Section v for available paint colors.



## Terminal Compartments Aluminum

Pelco's 2-way Horizontal Terminal Compartments are cast aluminum supplied with ABS plastic doors. Each can be configured with either a top port or a rear port and are supplied with one or two 12-circuit terminal strips. Designed to fit a 4-1/2" OD pole.



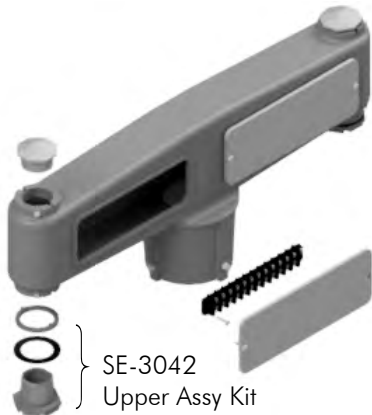
### Terminal Compartment Assy, Horizontal, Alum 2-Way Post Top for 4-1/2" OD Pole



SE-3143	-	Port Mountings	-	Terminal Strip	-	Coating
		TP=Top Port RP=Rear Port		1T=Terminal Strip (1) 2T=Terminal Strips (2)		PNC=Process No Color P__=Paint

Note:  
Plastic door standard, aluminum door available.

### Terminal Compartment Assy, Horizontal, Alum 2-Way Post Top for 4-1/2" OD Pole Cast Nipples



SE-3135	-	Port Mountings	-	Terminal Strip	-	Coating
		TP=Top Port RP=Rear Port		1T=Terminal Strip (1) 2T=Terminal Strips (2)		PNC=Process No Color P__=Paint

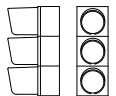
Note:  
Plastic door standard, aluminum door available.



### Terminal Compartment Assy, 2-Way, Alum 24" CTC for 4-1/2" OD Pole Cast Nipple

SE-3141	-	Coating
		PNC=Process No Color P__=Paint

Note:  
Plastic door standard, aluminum door available.



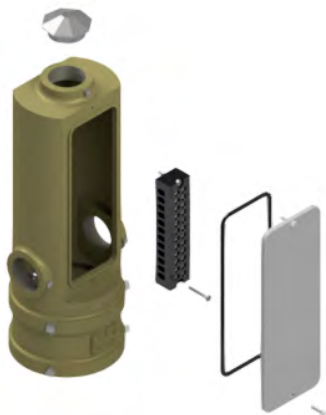
- Note: 1. All assemblies are supplied standard with stainless steel fasteners.  
2. Terminal Compartments supplied standard with plastic door, aluminum door available.  
3. See Reference Section v for available paint colors.



# Terminal Compartments

## Bronze & Iron

Pelco's bronze and iron Post Top Terminal Compartments are available in a 2-way configuration. Each are supplied standard with a 12-circuit terminal block and an ABS plastic door. Designed to fit a 4-1/2" OD pole.

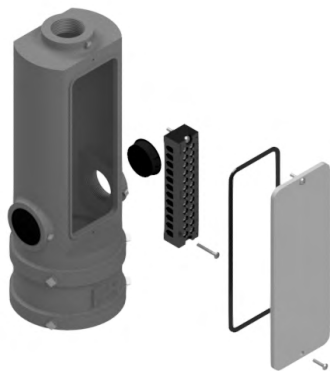


Terminal Compartment Assy, Vertical  
2-Way Post Top for 4-1/2" OD Pole, Bronze

SE-4422 - 

Coating
PNC=Process No Color
P__=Paint

Note:  
Plastic door standard, aluminum door available.



Terminal Compartment Assy, Vertical  
2-Way Post Top for 4-1/2" OD Pole, Iron

SE-3331 - 

Coating
GLV=Galvanized
P__=Paint

Note:  
Plastic door standard, aluminum door available.

Note: 1. All assemblies are supplied standard with stainless steel fasteners.  
2. Terminal Compartments supplied standard with plastic door, aluminum door available.  
3. See Reference Section v for available paint colors.

